

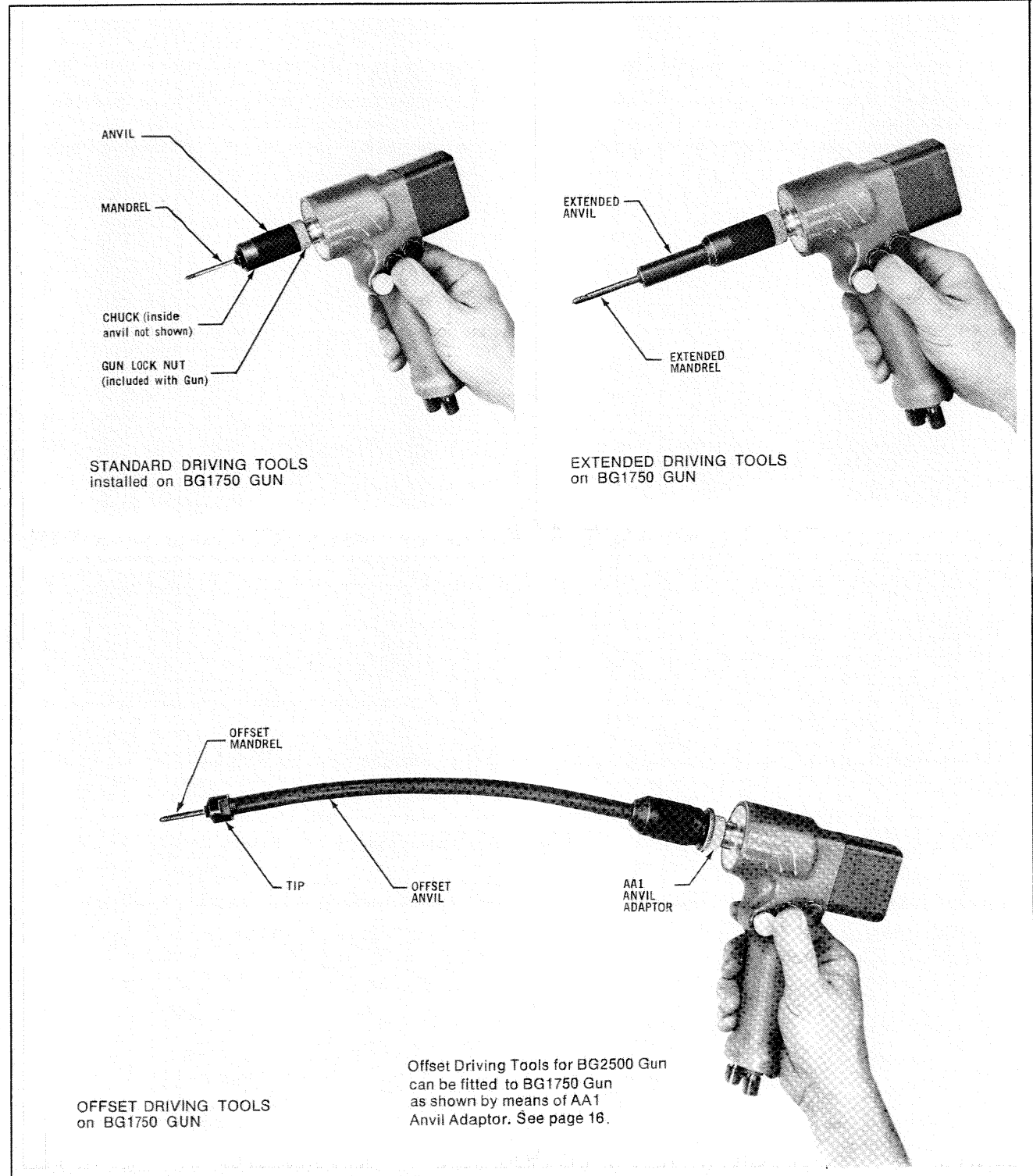
## DRIVING TOOLS

A set of Driving Tools made from hardened tool steels will adapt the Guns to individual diameter Blind Nut or Blind Bolt sleeve head configurations and required grip ranges. A set of Driving Tools includes an Anvil, Chuck and Mandrel to install a Sleeve and Expander. Standard length driving tools are available for normally accessible installations. Extended length driving tools provide a longer reach up to 1 7/8" into channels or to overcome adjacent obstructions. Offset driving tools extend in a slight curve up to 10" or more to reach into tightly congested areas. See photos on opposite page.

## INSTALLATION TOOLING

Blind Bolt Core Bolt Drivers fitted to both hand and power drivers accommodate the Phillips, Frearson, Torq-Set and Hi-Torque recesses used on various Core Bolts.

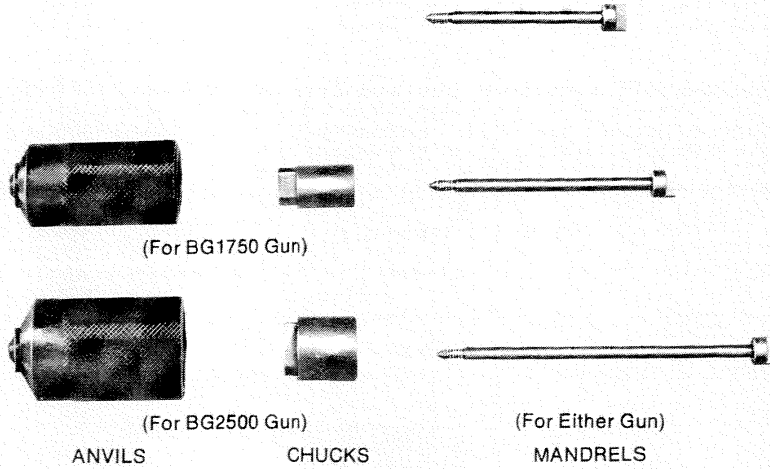
By utilizing specified Anvils, Chucks and Mandrels, BG series Guns can drive Blind Nuts, Blind Bolts and other blind fasteners from Hi-Shear Corporation. These fasteners include Hi-Kor, Blind-Sert, Blind Press Nuts. Consult specific tooling standards pages for these products to determine range of sizes and tooling requirements for particular guns and fasteners.



## DRIVING TOOLS - typical sets

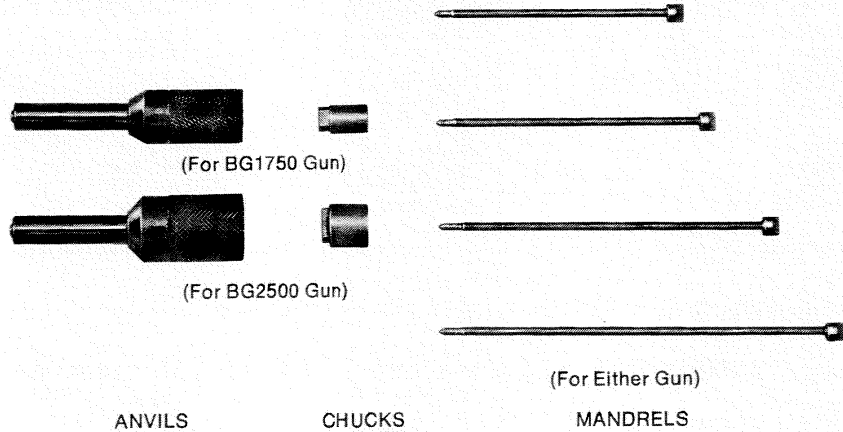
### Standard length

Used for normal installation of Blind Nuts or Blind Bolts. Each Gun requires a matching size Anvil and Chuck. Mandrels, for various grip lengths, can be used with either Gun.



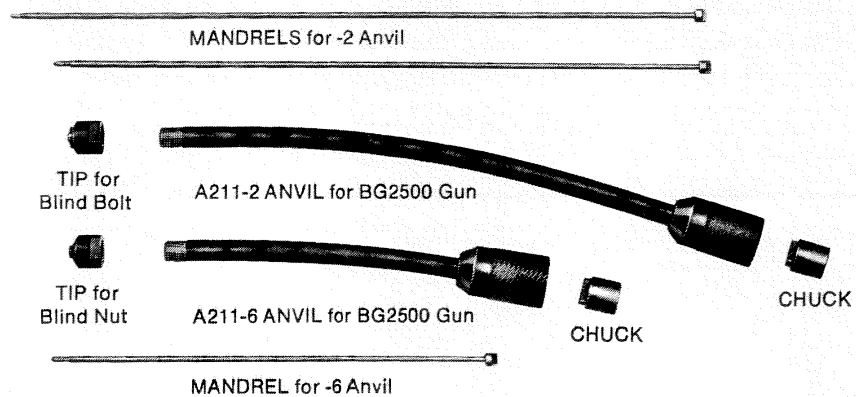
### Extended length

Used to install Blind Nuts or Blind Bolts in deep channel type areas. Each Gun requires a matching size Anvil and Chuck. Mandrels, for various grip lengths, can be used with either Gun.



### Offset

Used in hard-to-reach areas. Tools are designed for use with BG2500 Gun. AA1 Anvil Adaptor, can be used on a BG1750 Gun. (See Page16).



## DRIVING TOOLS - How to Order

Anvil heads are designed to seat against the shapes and diameter sizes of the Sleeve heads of Blind Nuts and Blind Bolts. Each type of Anvil is designated by a letter. This Anvil letter designation is indicated on each of the Driving Tool tabulated ordering charts following and on the Selection Charts of Blind Nuts and Blind Bolts.  
**To order a set of Driving Tools**, note the letter designating type of tooling on the top of each column on the Selection Charts. Examples of ordering

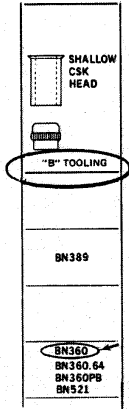
## INSTALLATION TOOLING

are noted below for tooling items required to install Blind Nuts and Blind Bolts.

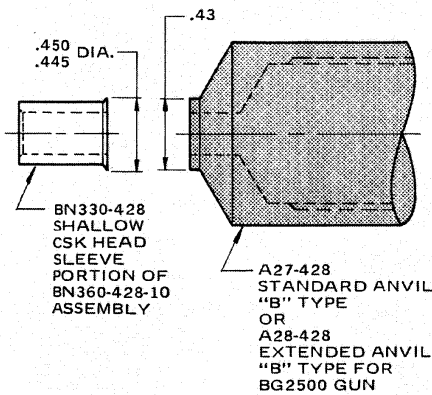
**Mandrels** are available in various lengths to accommodate several or more grip ranges of material thickness. Be sure to specify the correct grip range Mandrel to accommodate the required material thickness of the joint to be fastened.

**Blind Nut Ordering Example:** To order Driving Tools (Anvil, Chuck and Mandrel) for a BG2500 Gun to install a BN360-428-10 Blind Nut (for a 1/4-28 bolt, 10/16 or 3/8 grip length) into a material thickness of 3/8 inch, the Selection Chart indicates "B" type tooling. Turn to the driving tool ordering pages 22 and 24 and select one each of the standard or extended length tooling as follows:

- A27-428 Anvil ("B" Type, Standard)  
 C2-12 Chuck  
 M1-12 Mandrel (1/2" to 1" Grip)  
 or  
 A28-428 Anvil ("B" Type, Extended)  
 C2-12 Chuck  
 M3-12 Mandrel (1/2" to 1" Grip)

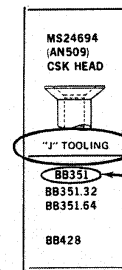


DETAIL OF BLIND NUT SELECTION CHART

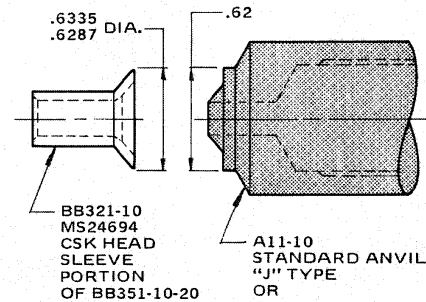


**Blind Bolt Ordering Example:** To order Driving Tools (Anvil, Chuck, Mandrel) for a BG1750 Gun and the Core Bolt Driver to install a BB351-10-20 (10/32 or 5/16 sleeve diameter, 20/16 or 1/4 grip length) into a material thickness of 1/4 inch, the Selection Chart indicates "J" type tooling. Turn to the tool ordering page 28 and select one each of the standard or extended length tooling as follows:

- A11-10 Anvil ("J" Type, Standard)  
 C1-10 Chuck  
 M2-10 Mandrel (1/2" to 1" Grip)  
 HTS3 Core Bolt Driver (Hi-Torque)  
 or  
 A12-10 Anvil ("J" Type, Extended)  
 C1-10 Chuck  
 M4-10 Mandrel (1/2" to 1" Grip)  
 HTS3 Core Bolt Driver (Hi-Torque)



DETAIL OF BLIND BOLT SELECTION CHART



### BLIND BOLT CORE BOLT DRIVERS

#### INSERT DRIVERS



PHILLIPS FREARSON

#### HI-TORQUE RECESS ONE-PIECE DRIVERS

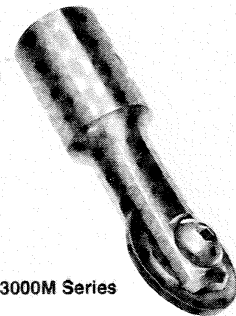


HTS Series



HTA Series

#### HI-TORQUE RECESS 2-PIECE DRIVERS



HT3000M Series

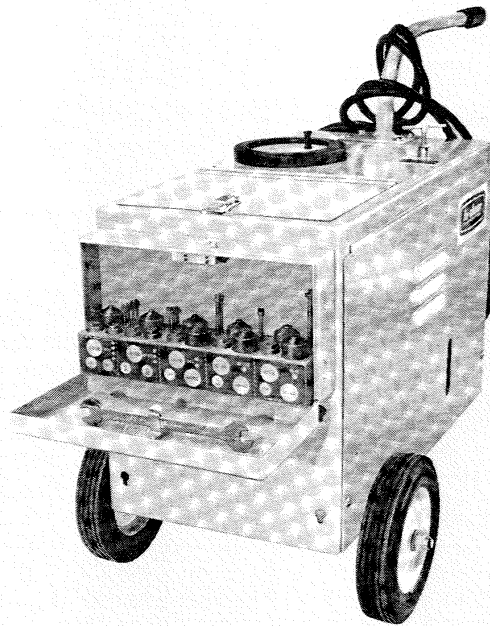
Blind Bolt First Dash No.	Core Bolt Recess Type	INSERT DRIVERS	1 PIECE DRIVERS		2 PIECE DRIVERS			
		1/4 Hex. Insert Bit Part Number	HTS SERIES Square Drive Socket	Part Number	HTA SERIES Square Drive Socket	Part Number	HT3000M SERIES Square Drive Socket	Part Number
-5	Phillips #1 Frearson	440-1P 440-F1						
-6	Phillips #1 Frearson	400-1P 440-F1						
-8	Phillips #2 Frearson	440-2P 440-F1						
-10	Hi-Torque #3		1/4	HTS3	1/4	HTA3	1/4	HT3203M
-12	Hi-Torque #4		3/8	HTS4	3/8	HTA4	3/8	HT3304M
-14	Hi-Torque #5		3/8	HTS5	3/8	HTA5	3/8	HT3305M
-16	Hi-Torque #6		3/8	HTS6	3/8	HTA6	3/8 1/2	HT3306M HT3406M

These drivers are used with standard socket wrenches or torque wrenches to install core bolts into the installed portion (sleeve and expander) of Blind Bolts.

## BK SERIES DRIVING TOOL KITS

### BK series driving tool kits

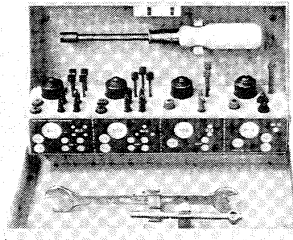
To simplify the ordering, use, and safe storage of driving tools used to install Blind Nuts and Blind Bolts, the BK series Driving Tool Kits are available. The tools are conveniently contained in metal boxes suitable for mounting on the BP7000 Power Units. They contain a selection of the necessary tools for either the BG1750 or BG2500 Gun to install small or large diameter Blind Bolts or Blind Nuts or combinations thereof. As required, the Tool Kits will contain Anvils, Chucks, Mandrels, Core Bolt Drivers, Open End Wrench and Screwdrivers plus spare Chucks, Mandrels and Core Bolt Drivers.



BP7000 Air-Hydraulic Power Unit shown with BK7 Driving Tool Kit attached to Power Unit.

### BK3 TOOL KIT—BLIND BOLTS

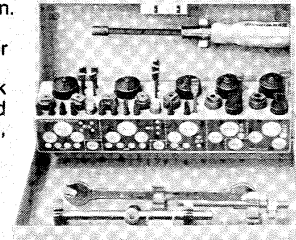
- For use with BG1750 Gun. Kit does not include gun.
- "J" type Driving Tools for Blind Bolts:
  - 5(5/32) thru -10 (5/16), 100° csk MS24694 (AN509) head and protruding head styles, 0-1" grip length.



SIZE OF BLIND NUT TO BE DRIVEN	TOOL PART NUMBER	DRIVING TOOL NAME	QUANTITY IN TOOL KIT
-5	A11-5	Anvil	1
-6	A11-6	Anvil	1
-8	A11-8	Anvil	1
-10	A11-10	Anvil	1
-5	C1-5	Chuck	2
-6	C1-6	Chuck	1
-8	C1-8	Chuck	1
-10	C1-10	Chuck	1
-5	M1-5	Mandrel	4
-6	M1-6	Mandrel	3
-8	M1-8	Mandrel	2
-10	M1-10	Mandrel	1
-5	440-1P	Core Bolt Driver Phillips #1	4
-6	440-1F	Core Bolt Driver Frearson	4
-8	440-2P	Core Bolt Driver Phillips #2	2
-10	HTS3	Core Bolt Driver Hi-Torque	2
	3/8-7/16	Open End Wrench	1
	1/4 Driver	T-Handle	1
		Screwdriver	1

### BK4 TOOL KIT—BLIND BOLTS

- For use with BG2500 Gun. Kit does not include gun.
- "J" type Driving Tools for Blind Bolts:
  - 5 thru -12 sizes, 100 csk MS24694 (AN509) head and protruding head styles, 0-1" grip.



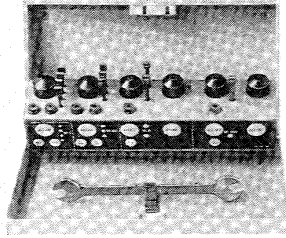
SIZE OF BLIND NUT TO BE DRIVEN	TOOL PART NUMBER	DRIVING TOOL NAME	QUANTITY IN TOOL KIT
-5	A21-5	Anvil	1
-6	A21-6	Anvil	1
-8	A21-8	Anvil	1
-10	A21-10	Anvil	1
-12	A21-12	Anvil	1
-5	C2-5	Chuck	2
-6	C2-6	Chuck	2
-8	C2-8	Chuck	1
-10	C2-10	Chuck	1
-12	C2-12	Chuck	1
-5	M1-5	Mandrel	4
-6	M1-6	Mandrel	3
-8	M1-8	Mandrel	2
-10	M1-10	Mandrel	1
-12	M1-12	Mandrel	1
-5	440-1P	Core Bolt Driver Phillips #1	4
-6	440-1F	Core Bolt Driver Frearson	1
-8	440-2P	Core Bolt Driver Phillips #2	2
-10	HTS3	Core Bolt Driver Hi-Torque	2
-12	HTS4A	Core Bolt Driver Hi-Torque	2
	3/8-7/16	Open End Wrench	1
	1/4 Drive	T-Handle	1
	3/8 Drive	T-Handle	1
		Screwdriver	1



## BK SERIES DRIVING TOOL KITS

### BK6 TOOL KIT—BLIND NUTS

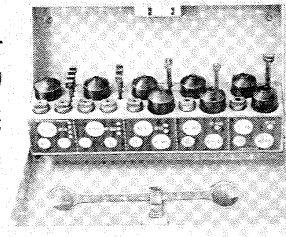
- For use with BG1750 Gun. Kit does not include gun.
- "A" and "B" type Driving Tools for Blind Nuts: 440 thru -1032, 100° csk shallow head style, 0-1" grip length.



SIZE OF BLIND NUT TO BE DRIVEN	TOOL PART NUMBER	DRIVING TOOL NAME	QUANTITY IN TOOL KIT
-440	A17-440	Anvil	1
-632	A17-632	Anvil	1
-832 (BN359)	A15-832	Anvil	1
-832	A17-832	Anvil	1
-1032	A15-1032	Anvil	1
-1032 (BN359)	A17-1032	Anvil	1
-440	C1-5	Chuck	2
-632	C1-632	Chuck	2
-832	C1-8	Chuck	1
-1032	C1-1032	Chuck	1
-440	M1-5	Mandrel	4
-632	M1-632	Mandrel	3
-832	M1-8	Mandrel	2
-1032	M1-1032	Mandrel	1
	3/8-7/16	Open End Wrench	1

### BK7 TOOL KIT—BLIND NUTS

- For use with BG2500 Gun. Kit does not include gun.
- "A" and "B" type Driving Tools for Blind Nuts: -440 thru -428, 100° csk shallow head style, 0-1" grip length.

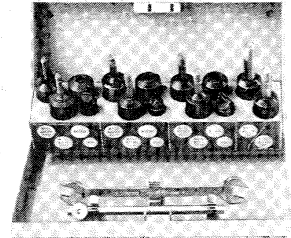


SIZE OF BLIND NUT TO BE DRIVEN	TOOL PART NUMBER	DRIVING TOOL NAME	QUANTITY IN TOOL KIT
-440	A27-440	Anvil	1
-632	A27-632	Anvil	1
-832 (BN359)	A25-832	Anvil	1
-832	A27-832	Anvil	1
-1032 (BN359)	A25-1032	Anvil	1
-1032	A27-1032	Anvil	1
-428 (BN359)	A25-428	Anvil	1
-428	A27-428	Anvil	1
-440	C2-5	Chuck	2
-632	C2-632	Chuck	2
-832	C2-8	Chuck	1
-1032	C2-1032	Chuck	1
-428	C2-12	Chuck	1
-440	M1-5	Mandrel	4
-632	M1-632	Mandrel	3
-832	M1-8	Mandrel	2
-1032	M1-1032	Mandrel	1
-428	M1-12	Mandrel	1
	3/8-7/16	Open End Wrench	1

## INSTALLATION TOOLING

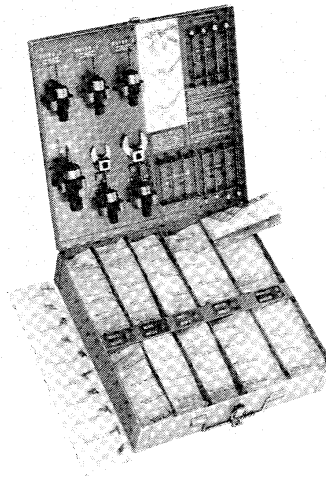
### BK8 TOOL KIT—BLIND BOLTS AND BLIND NUTS

- For use with BG2500 Gun. Kit does not include gun.
- For driving large size "J" type Blind Bolts: -12, -14 and -16.
- For driving large size "A" and "B" type Blind Nuts: -428 thru -820.
- 0-1" grip length.



SIZE OF BLIND BOLT OF BLIND NUT TO BE DRIVEN	TOOL PART NUMBER	DRIVING TOOL NAME	QUANTITY IN TOOL KIT
-12	A21-12	Anvil	1
-14	A21-14	Anvil	1
-16	A21-16	Anvil	1
-428 (BN359)	A25-428	Anvil	1
-428	A27-428	Anvil	1
-524 (359)	A25-524	Anvil	1
-524	A27-524	Anvil	1
-624 (BN359)	A25-624	Anvil	1
-624	A27-624	Anvil	1
-720	A27-720	Anvil	1
-820	A27-820	Anvil	1
-12 -428	C2-12	Chuck	2
-14 -524	C2-14	Chuck	2
-16 -624	C2-16	Chuck	2
-720 and -820	C3	Chuck	2
-12 -428	M1-12	Mandrel	2
-14 -524	M1-14	Mandrel	1
-16 -624	M1-16	Mandrel	2
-720	M1-720	Mandrel	1
-820	M1-820	Mandrel	1
-12	HTS4A	Core Bolt Driver Hi-Torque	1
-14	HTS5	Core Bolt Driver Hi-Torque	1
-16	HTS6	Core Bolt Driver Hi-Torque	1
	3/8-7/16	Open End Wrench	1
	3/8 Drive	T-Handle	1

### FK110 FIX KIT (With Hand Tools)



The FK110 Fix Kit is also identified by Federal Stock Number 5180-675-9224, Manufacturer's Code, 73197.

*FK110 FIX KIT Shows Hand Tools, Spare Mandrels and packaged Blind Bolts and Blind Nuts*

This kit is used in the field to repair or modify aerospace structures where power equipment is not available. The Kit contains packages of five each BB351 and BB352 Blind Bolts (-5 thru -10) and BN360 Blind Nuts (-1032 and -428) in varying grip lengths from 1/2 thru 1 inch; six different sized "BH" series Hand Tools and required mandrels plus spares; and one each of AN8506-6 and -10 Crow Foot Wrenches. The metal container size is 14 1/2" long, 14 1/2" wide and 3 3/8" deep. Kit weight: 22 lbs. The Kit is fully described in Hi-Shear Corporation Brochure 2-1066.

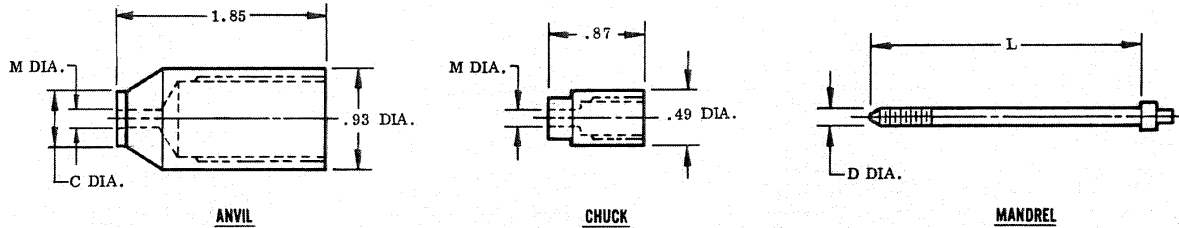
# BLIND NUT "A" TYPE DRIVING TOOLS

Install these Blind Nut Part Numbers

HEAD STYLE: 100° Countersunk Shear Head

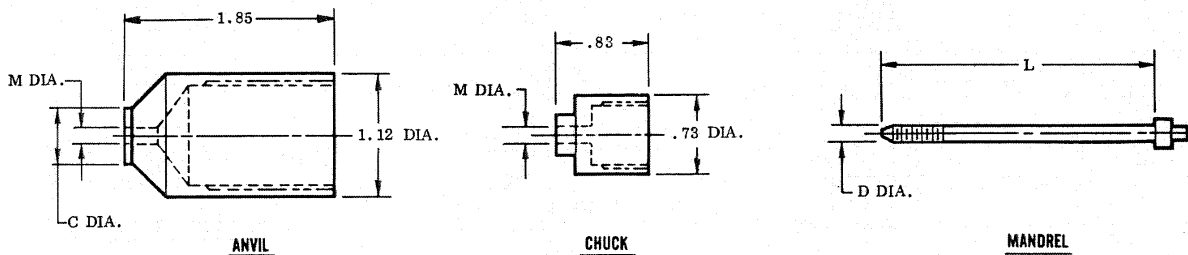
BN359    BN514    BN520GA    BN545G    BN555G  
 BN359PB    BN520    BN538    BN555

## 'A' Standard Driving Tools (1.85 long Anvil). For Use with BG1750 Gun.



BLIND NUT FIRST DASH NO.	ANVIL ("A" Type)			CHUCK		MANDREL											
	TOOL NO. TO ORDER	C DIA.	M DIA.	TOOL NO. TO ORDER	M DIA.	MIN. GRIP—1/2" BLIND NUT GRIP RANGE			1/2"—1" BLIND NUT GRIP RANGE			1"—2" BLIND NUT GRIP RANGE			2"—3" BLIND NUT GRIP RANGE		
						TOOL NO. TO ORDER	D DIA.	L	TOOL NO. TO ORDER	D DIA.	L	TOOL NO. TO ORDER	D DIA.	L	TOOL NO. TO ORDER	D DIA.	L
-832	A15-832	.38	.166	C1-8	.166	M01-8	.164	2.00	M1-8	.164	2.50	M2-8	.164	3.50			
-1024 -1032	A15-1032	.46	.191	C1-1032	.191	M01-1024 M01-1032	.189	2.10	M1-1024 M1-1032	.189	2.60	M2-1024 M2-1032	.189	3.60	M3-1024 M3-1032	.189	4.60

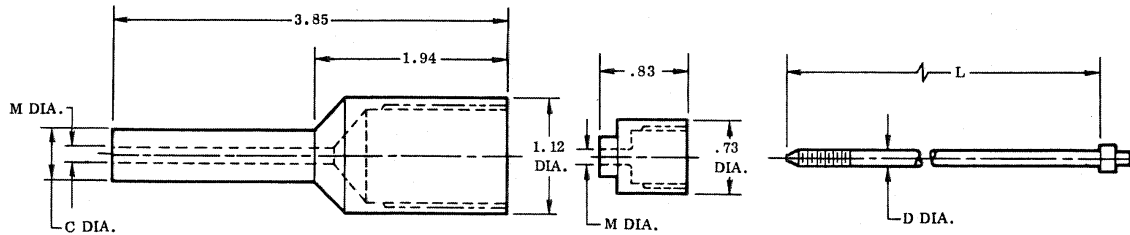
## 'A' Standard Driving Tools (1.85 long Anvil). For Use with BG2500 Gun.



BLIND NUT FIRST DASH NO.	ANVIL ("A" Type)			CHUCK		MANDREL											
	TOOL NO. TO ORDER	C DIA.	M DIA.	TOOL NO. TO ORDER	M DIA.	MIN. GRIP—1/2" BLIND NUT GRIP RANGE			1/2"—1" BLIND NUT GRIP RANGE			1"—2" BLIND NUT GRIP RANGE			2"—3" BLIND NUT GRIP RANGE		
						TOOL NO. TO ORDER	D DIA.	L	TOOL NO. TO ORDER	D DIA.	L	TOOL NO. TO ORDER	D DIA.	L	TOOL NO. TO ORDER	D DIA.	L
-832	A25-832	.38	.166	C2-8	.166	M01-8	.164	2.00	M1-8	.164	2.50	M2-8	.164	3.50			
-1024 -1032	A25-1032	.46	.191	C2-1032	.191	M01-1024 M01-1032	.189	2.10	M1-1024 M1-1032	.189	2.60	M2-1024 M2-1032	.189	3.60	M3-1024 M3-1032	.189	4.60
-420 -428	A25-428	.54	.250	C2-12	.250	M01-420 M01-12	.248	2.40	M1-420 M1-12	.248	2.85	M2-420 M2-12	.248	3.85	M3-420 M3-12	.248	4.85
-518 -524	A25-524	.65	.313	C2-14	.313	M01-518 M01-14	.310	2.50	M1-518 M1-14	.310	3.00	M2-518 M2-14	.310	4.00	M3-518 M3-14	.310	5.00
-616 -624	A25-624	.74	.375	C2-16	.375	M01-616 M01-16	.373	2.58	M1-616 M1-16	.373	3.05	M2-616 M2-16	.373	4.05	M3-616 M3-16	.373	5.05

# INSTALLATION TOOLING

## 'A' Extended Driving Tools (3.85 long Anvil). For Use with BG1750 Gun.



BLIND NUT FIRST DASH NO.	ANVIL ("A" Type)				CHUCK		MANDREL											
	TOOL NO. TO ORDER	C DIA.	M DIA.	TOOL NO. TO ORDER	M DIA.	MIN. GRIP—1/2" BLIND NUT GRIP RANGE			1/2"—1" BLIND NUT GRIP RANGE			1"—2" BLIND NUT GRIP RANGE			2"—3" BLIND NUT GRIP RANGE			
						TOOL NO. TO ORDER	D DIA.	L	TOOL NO. TO ORDER	D DIA.	L	TOOL NO. TO ORDER	D DIA.	L	TOOL NO. TO ORDER	D DIA.	L	
-832	A26-832	.38	.166	C2-8	.166	M2.5-8	.164	4.00	M3-8	.164	4.50	M4-8	.164	5.50				
-1024 -1032	A26-1032	.46	.191	C2-1032	.191	M2.5-1024 M2.5-1032	.189	4.10	M3-1024 M3-1032	.189	4.60	M4-1024 M4-1032	.189	5.60	M5-1024 M5-1032	.189	6.60	
-420 -428	A26-428	.54	.250	C2-12	.250	M2.5-420 M2.5-12	.248	4.40	M3-420 M3-12	.248	4.85	M4-420 M4-12	.248	5.85	M5-420 M5-12	.248	6.85	
-518 -524	A26-524	.65	.313	C2-14	.313	M2.5-518 M2.5-14	.310	4.50	M3-518 M3-14	.310	5.00	M4-518 M4-14	.310	6.00	M5-518 M5-14	.310	7.00	
-616 -624	A26-624	.74	.375	C2-16	.375	M2.5-616 M2.5-16	.373	4.58	M3-616 M3-16	.373	5.05	M4-616 M4-16	.373	6.05	M5-616 M5-16	.373	7.05	

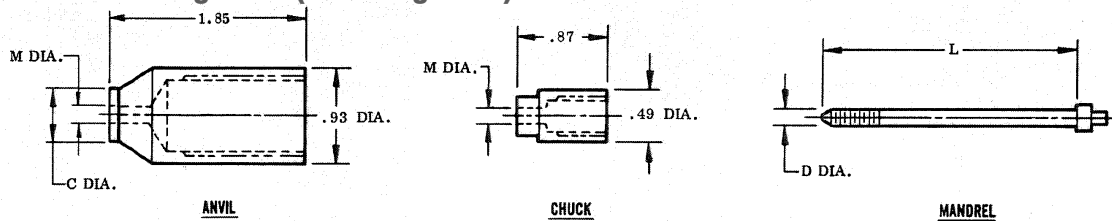
## BLIND NUT "B" TYPE DRIVING TOOLS

Install these Blind Nut Part Numbers

HEAD STYLE: 100° Countersunk Shallow

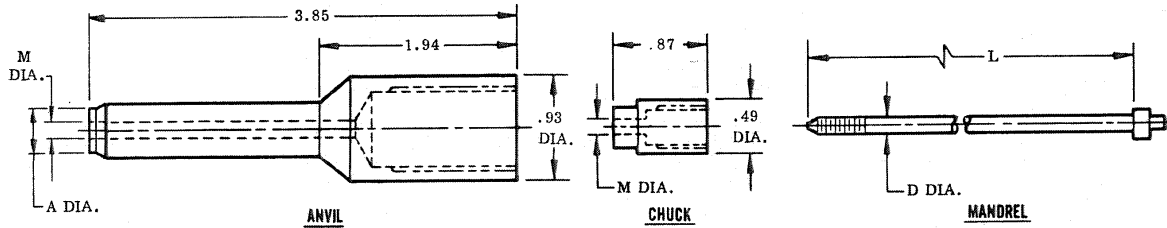
BN155	BN372P	BN518	BN528	BN553	BN564	BNB1105	BNB1111
BN157	BN377	BN521	BN532	BN556	BN565	BNB1105PB	BNB1112
BN158	BN388	BN525	BN535	BN556G	BNB1100	BNB1106	BNB1113
BN360	BN388L	BN525GA	BN536	BN557	BNB1101	BNB1107	BTN1
BN360PB	BN389	BN526	BN537	BN561	BNB1102	BNB1108	BTN1PB
BN360.64	BN516	BN526NL	BN537LK	BN562	BNB1103	BNB1109	BTN1G
BN372	BN516PB	BN527	BN543	BN563	BNB1104	BNB1110	

## 'B' Standard Driving Tools (1.85 long Anvil). For Use with BG2500 Gun.



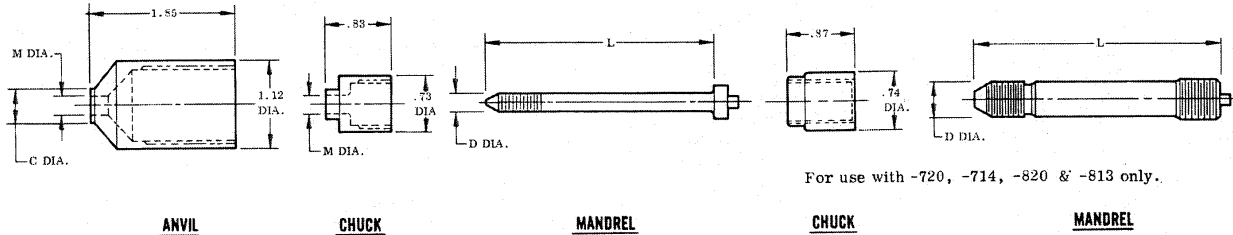
BLIND NUT FIRST DASH NO.	ANVIL ("B" Type)				CHUCK		MANDREL											
	TOOL NO. TO ORDER	C DIA.	M DIA.	TOOL NO. TO ORDER	M DIA.	MIN. GRIP—1/2" BLIND NUT GRIP RANGE			1/2"—1" BLIND NUT GRIP RANGE			1"—2" BLIND NUT GRIP RANGE			2"—3" BLIND NUT GRIP RANGE			
						TOOL NO. TO ORDER	D DIA.	L	TOOL NO. TO ORDER	D DIA.	L	TOOL NO. TO ORDER	D DIA.	L	TOOL NO. TO ORDER	D DIA.	L	
-440	A17-440	.21	.113	C1-5	.113	M01-5	.111	1.80	M1-5	.111	2.30							
-632	A17-632	.26	.141	C1-632	.141	M01-632	.138	1.90	M1-632	.138	2.40							
-832	A17-832	.30	.166	C1-8	.166	M01-8	.164	2.00	M1-8	.164	2.50	M2-8	.164	3.50				
-1024 -1032	A17-1032	.35	.191	C1-1032	.191	M01-1024 M01-1032	.189	2.10	M1-1024 M1-1032	.189	2.60	M2-1024 M2-1032	.189	3.60	M3-1024 M3-1032	.189	4.60	

## 'B' Extended Driving Tools (3.85 long Anvil). For Use with BG1750 Gun.



BLIND NUT FIRST DASH NO.	ANVIL ("B" Type)			CHUCK		MANDREL													
	TOOL NO. TO ORDER	A DIA.	M DIA.	TOOL NO. TO ORDER	M DIA.	MIN. GRIP—1/2" BLIND NUT GRIP RANGE			1/2"—1" BLIND NUT GRIP RANGE			1"—2" BLIND NUT GRIP RANGE			2"—3" BLIND NUT GRIP RANGE				
						TOOL NO. TO ORDER	D DIA.	L	TOOL NO. TO ORDER	D DIA.	L	TOOL NO. TO ORDER	D DIA.	L	TOOL NO. TO ORDER	D DIA.	L		
-440	A18-440	.21	.113	C1-5	.113	M2.5-5	.111	3.80	M3-5	.111	4.30								
-632	A18-632	.26	.141	C1-632	.141	M2.5-632	.138	3.90	M3-632	.138	4.40								
-832	A18-832	.30	.166	C1-8	.166	M2.5-8	.164	4.00	M3-8	.164	4.50	M4-8	.164	5.50					
-1024 -1032	A18-1032	.35	.191	C1-1032	.191	M2.5-1024 M2.5-1032	.189	4.10	M3-1024 M3-1032	.189	4.60	M4-1024 M4-1032	.189	5.60	M5-1024 M5-1032	.189	6.60		

## 'B' Standard Driving Tools (1.85 long Anvil). For Use with BG2500 Gun.



For use with -720, -714, -820 & -813 only.

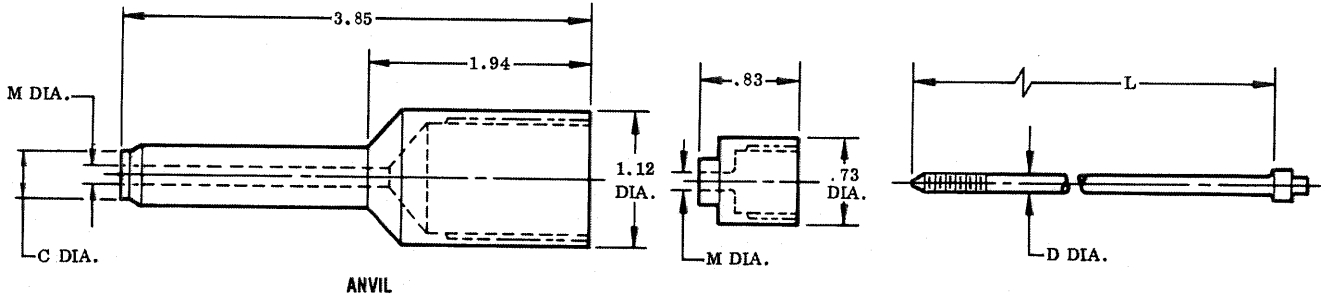
BLIND NUT FIRST DASH NO.	ANVIL ("B" Type)			CHUCK		MANDREL													
	TOOL NO. TO ORDER	C DIA.	M DIA.	TOOL NO. TO ORDER	M DIA.	MIN. GRIP—1/2" BLIND NUT GRIP RANGE			1/2"—1" BLIND NUT GRIP RANGE			1"—2" BLIND NUT GRIP RANGE			2"—3" BLIND NUT GRIP RANGE				
						TOOL NO. TO ORDER	D DIA.	L	TOOL NO. TO ORDER	D DIA.	L	TOOL NO. TO ORDER	D DIA.	L	TOOL NO. TO ORDER	D DIA.	L		
-440	A27-440	.21	.113	C2-5	.113	M01-5	.111	1.80	M1-5	.111	2.30								
-632	A27-632	.26	.141	C2-632	.141	M01-632	.139	1.90	M1-632	.139	2.40								
-832	A27-832	.30	.166	C2-8	.166	M01-8	.164	2.00	M1-8	.164	2.50	M2-8	.164	3.50					
-1024 -1032	A27-1032	.35	.191	C2-1032	.191	M01-1024 M01-1032	.189	2.10	M1-1024 M1-1032	.189	2.60	M2-1024 M2-1032	.189	3.60	M3-1024 M3-1032	.189	4.60		
-428 -420	A27-428	.43	.250	C2-12	.250	M01-12 M01-420	.248	2.40	M1-12 M1-420	.248	2.85	M2-12 M2-420	.248	3.85	M3-12 M3-420	.248	4.85		
-524 -518	A27-524	.51	.313	C2-14	.313	M01-14 M01-518	.310	2.50	M1-14 M1-518	.310	3.00	M2-14 M2-518	.310	4.00	M3-14 M3-518	.310	5.00		
-624 -616	A27-624	.57	.375	C2-16	.375	M01-16 M01-616	.373	2.58	M1-16 M1-616	.373	3.05	M2-16 M2-616	.373	4.05	M3-16 M3-616	.373	5.05		
-720 -714	A27-720	.63	.438	C3		M01-720 M01-714	.435	2.60	M1-720 M1-714	.435	3.10	M2-720 M2-714	.435	4.10	M3-720 M3-714	.435	5.10		
-820 -813	A27-820	.69	.500	C3		M01-820 M01-813	.498	2.70	M1-820 M1-813	.498	3.20	M2-820 M2-813	.498	4.20	M3-820 M3-813	.498	5.20		



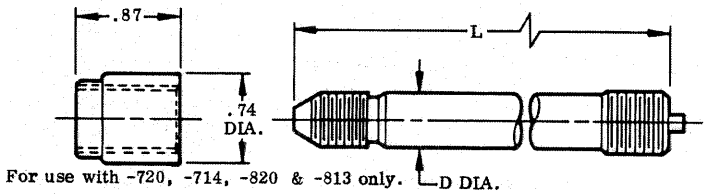
# INSTALLATION TOOLING

## 'B' Extended Driving Tools (3.85 long Anvil). For Use with BG2500 Gun.

'B' EXTENDED DRIVING TOOLS (3.85" long Anvil) For Use with BG2500 Gun



ANVIL

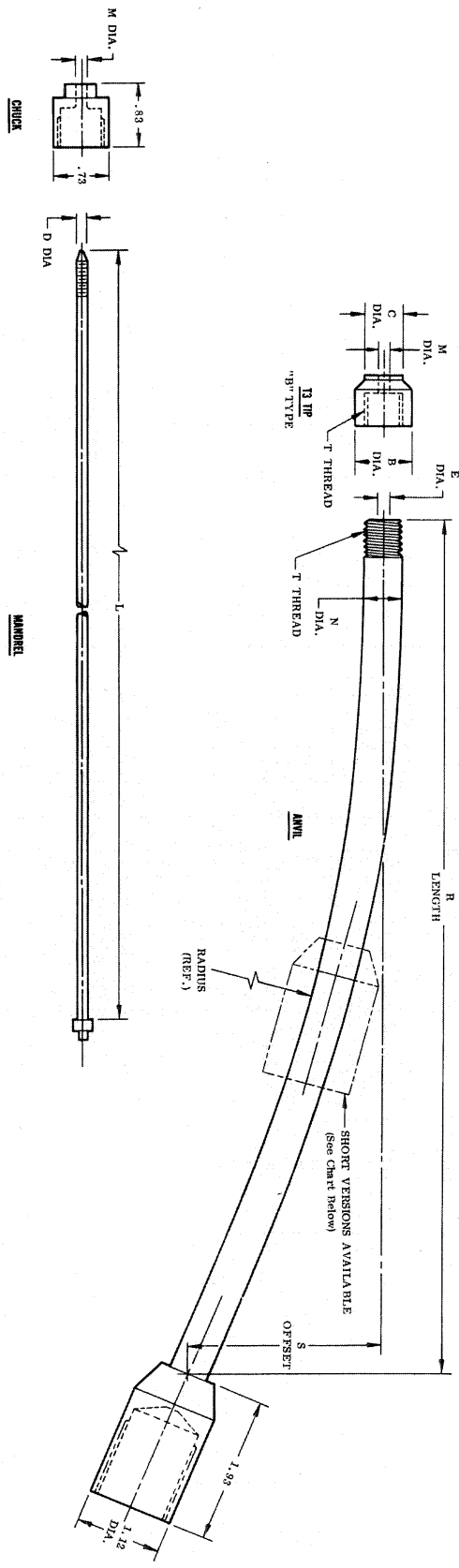


CHUCK

MANDREL

BLIND NUT FIRST DASH NO.	ANVIL ("B" Type)		CHUCK		MANDREL												
	TOOL NO. TO ORDER	C DIA.	M DIA.	TOOL NO. TO ORDER	M DIA.	MIN. GRIP—1/2" BLIND NUT GRIP RANGE			1/2"—1" BLIND NUT GRIP RANGE			1"—2" BLIND NUT GRIP RANGE			2"—3" BLIND NUT GRIP RANGE		
						TOOL NO. TO ORDER	D DIA.	L	TOOL NO. TO ORDER	D DIA.	L	TOOL NO. TO ORDER	D DIA.	L	TOOL NO. TO ORDER	D DIA.	L
-440	A28-440	.21	.113	C2-5	.113	M2.5-5	.111	3.80	M3-5	.111	4.30						
-632	A28-632	.26	.141	C2-632	.141	M2.5-632	.138	3.90	M3-632	.138	4.40						
-832	A28-832	.30	.166	C2-8	.166	M2.5-8	.164	4.00	M3-8	.164	4.50	M4-8	.164	5.50			
-1024	A28-1032	.35	.193	C2-1032	.191	M2.5-1024	.189	4.10	M3-1024	.189	4.60	M4-1024	.189	5.60	M5-1024	.189	6.60
-1032						M2.5-1032			M3-1032			M4-1032			M5-1032		
-428	A28-428	.43	.261	C2-12	.250	M2.5-12	.248	4.40	M3-12	.248	4.85	M4-12	.248	5.85	M5-12	.248	6.85
-420						M2.5-420			M3-420			M4-420			M5-420		
-524	A28-524	.51	.313	C2-14	.313	M2.5-14	.310	4.50	M3-14	.310	5.00	M4-14	.310	6.00	M5-14	.310	7.00
-518						M2.5-518			M3-518			M4-518			M5-518		
-624	A28-624	.57	.385	C2-16	.375	M2.5-16	.373	4.58	M3-16	.373	5.05	M4-16	.373	6.05	M5-16	.373	7.05
-616						M2.5-616			M3-616			M4-616			M5-616		
-720	A28-720	.63	.448	C3		M2.5-720	.435	4.70	M3-720	.435	5.10	M4-720	.435	6.10	M5-720	.435	7.10
-714						M2.5-714			M3-714			M4-714			M5-714		
-820	A28-820	.69	.511	C3		M2.5-820	.498	4.80	M3-820	.498	5.20	M4-820	.498	6.20	M5-820	.498	7.20
-813						M2.5-813			M3-813			M4-813			M5-813		

# 'B' Offset Driving Tools. For Use with BG2500 Gun.



BLIND NUT FIRST DASH NO.	PART NO.	E DIA.	N DIA.	R LENGTH	S OFFSET	T THREAD	RADIUS REF.	TIP - ('B' Type)			BG2500 CHUCK		0-1" GRIP RANGE		MANDREL		1"-2" GRIP RANGE		
								PART NO.	C DIA.	B DIA.	M DIA.	T THREAD	PART NO.	M DIA.	PART NO.	D DIA.	LENGTH	PART NO.	D DIA.
-440	A211-1 A211-5	.19	.50	10.0 5.2	2.50 .75	1/2-20	18.0	T3-440 T3-440	.21	.750	.113	C2-5 C2-5	.113	M6-5 M8-5	.111	13.0 8.0	-	-	-
-632	A211-1 A211-5	.19	.50	10.0 5.2	2.50 .75	1/2-20	18.0	T3-632 T3-632	.26	.750	.141	C2-632 C2-632	.141	M6-632 M8-632	.138	13.0 8.0	-	-	-
-832	A211-2 A211-6	.23	.50	11.5 6.2	2.00 .72	1/2-20	29.0	T3-832 T3-832	.30	.750	.166	C2-8 C2-8	.166	M6-8 M8-8	.164	14.5 9.5	M7-8 -	.164	15.5 -
-1024	A211-2 A211-6	.23	.50	11.5 6.2	2.00 .72	1/2-20	29.0	T3-1032 T3-1032	.35	.750	.191	C2-1032 C2-1032	.191	M6-1024 M8-1024	.189	14.5 9.5	M7-1024 -	.189	15.5 -
-1032	A211-2 A211-6	.23	.50	11.5 6.2	2.00 .72	1/2-20	29.0	T3-1032 T3-1032	.35	.750	.191	C2-1032 C2-1032	.191	M6-1032 M8-1032	.189	14.5 9.5	M7-1032 -	.189	15.5 -
-420	A211-3 A211-7	.31	.62	11.2 6.0	1.80 .62	5/8-18	32.0	T3-428 T3-428	.43	.837	.250	C2-12 C2-12	.250	M6-420 M8-420	.248	14.5 9.5	M7-420 -	.248	15.5 -
-428	A211-3 A211-7	.31	.62	11.2 6.0	1.80 .62	5/8-18	32.0	T3-428 T3-428	.43	.837	.250	C2-12 C2-12	.250	M6-12 M8-12	.248	14.5 9.5	M7-12 -	.248	15.5 -

\* Note: The above driving tools (for Blind Nut sizes 4-40 thru -1024 and -1032) can be used with the BG1750 Gun when the latter is converted with the AA1 Anvil Adaptor and C1 series Chuck.

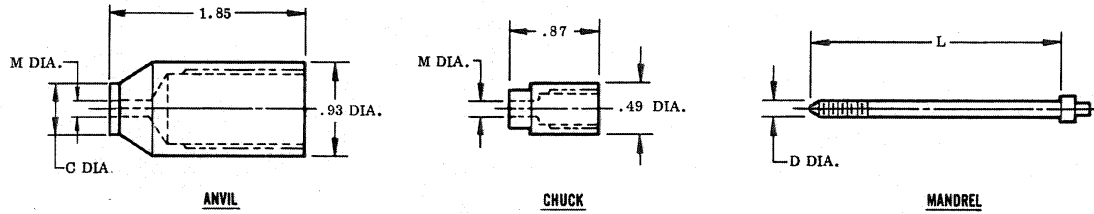
## BLIND NUT "C" TYPE DRIVING TOOLS

Install these Blind Nut Part Numbers

HEAD STYLE: Protruding

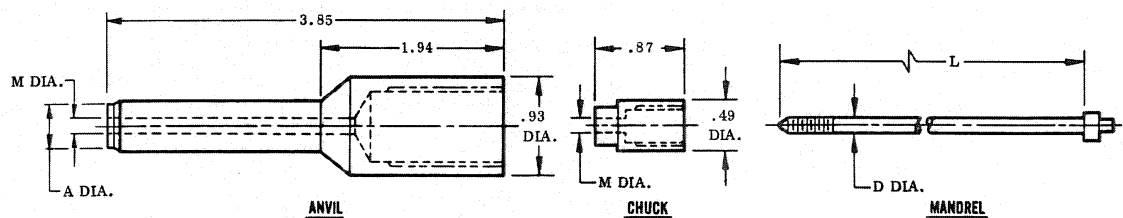
BN356G    BN519LH    BN530    BN533    BN540    BN542  
 BN356PB    BN523    BN530G    BN533G    BN540PB    BN549

### 'C' Standard Driving Tools (1.85 long Anvil). For Use with BG2500 Gun.



BLIND NUT FIRST DASH NO.	ANVIL ("C" Type)		CHUCK		MANDREL														
	TOOL NO. TO ORDER	C DIA.	M DIA.	TOOL NO. TO ORDER	M DIA.	MIN. GRIP—1/2" BLIND NUT GRIP RANGE			1/2"—1" BLIND NUT GRIP RANGE			1"—2" BLIND NUT GRIP RANGE			2"—3" BLIND NUT GRIP RANGE				
						TOOL NO. TO ORDER	D DIA.	L	TOOL NO. TO ORDER	D DIA.	L	TOOL NO. TO ORDER	D DIA.	L	TOOL NO. TO ORDER	D DIA.	L		
-440	A33-440	.29	.113	C1-5	.113	M01-5	.111	1.80	M1-5	.111	2.30								
-632	A33-632	.31	.141	C1-632	.141	M01-632	.138	1.90	M1-632	.138	2.40								
-832	A33-832	.41	.166	C1-8	.166	M01-8	.164	2.00	M1-8	.164	2.50	M2-8	.164	3.50					
-1024 -1032	A33-1032	.50	.191	C1-1032	.191	M01-1024 M01-1032	.189	2.10	M1-1024 M1-1032	.189	2.60	M2-1024 M2-1032	.189	3.60	M3-1024 M3-1032	.189	4.60		

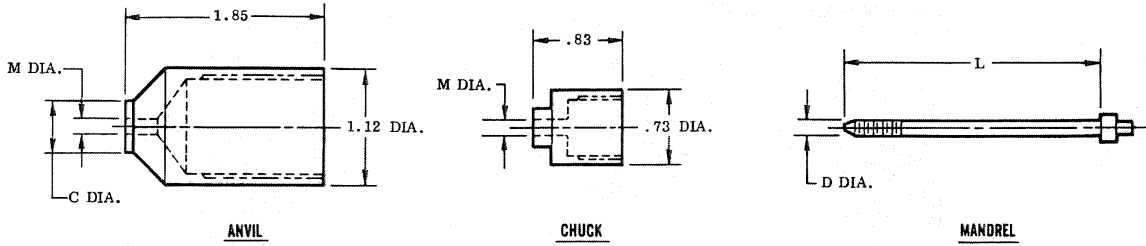
### 'C' Extended Driving Tools (3.85 long Anvil). For Use with BG1750 Gun.



BLIND NUT FIRST DASH NO.	ANVIL ("C" Type)		CHUCK		MANDREL														
	TOOL NO. TO ORDER	A DIA.	M DIA.	TOOL NO. TO ORDER	M DIA.	MIN. GRIP—1/2" BLIND NUT GRIP RANGE			1/2"—1" BLIND NUT GRIP RANGE			1"—2" BLIND NUT GRIP RANGE			2"—3" BLIND NUT GRIP RANGE				
						TOOL NO. TO ORDER	D DIA.	L	TOOL NO. TO ORDER	D DIA.	L	TOOL NO. TO ORDER	D DIA.	L	TOOL NO. TO ORDER	D DIA.	L		
-440	A35-440	.29	.113	C1-5	.113	M2.5-5	.111	3.80	M3-5	.111	4.30								
-632	A35-632	.31	.141	C1-632	.141	M2.5-632	.138	3.90	M3-632	.138	4.40								
-832	A35-832	.41	.166	C1-8	.166	M2.5-1032	.164	4.00	M3-8	.164	4.50	M4-8	.164	5.50					
-1024 -1032	A35-1032	.50	.191	C1-1032	.191	M2.5-1024 M2.5-1032	.189	4.10	M3-1024 M3-1032	.189	4.60	M4-1024 M4-1032	.189	5.60	M5-1024 M5-1032	.189	6.60		

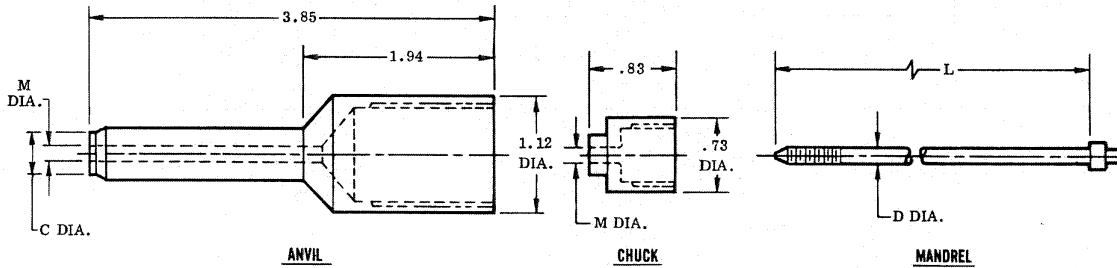
**'C' Standard Driving Tools (1.85 long Anvil). For Use with BG2500 Gun.**

'C' STANDARD DRIVING TOOLS (1.85 long Anvil) for Use with BG2500 GUN



BLIND NUT FIRST DASH NO.	ANVIL ("C" Type)		CHUCK		MANDREL												
	TOOL NO. TO ORDER	C DIA.	M DIA.	TOOL NO. TO ORDER	M DIA.	MIN. GRIP-1/2" BLIND NUT GRIP RANGE			1/2"-1" BLIND NUT GRIP RANGE			1"-2" BLIND NUT GRIP RANGE			2"-3" BLIND NUT GRIP RANGE		
						TOOL NO. TO ORDER	D DIA.	L	TOOL NO. TO ORDER	D DIA.	L	TOOL NO. TO ORDER	D DIA.	L	TOOL NO. TO ORDER	D DIA.	L
-440	A32-440	.29	.113	C2-5	.113	M01-5	.111	1.80	M1-5	.111	2.30						
-632	A32-632	.31	.141	C2-632	.141	M01-632	.139	1.90	M1-632	.139	2.40						
-832	A32-832	.41	.166	C2-8	.166	M01-8	.164	2.00	M1-8	.164	2.50	M2-8	.164	3.50			
-1024	A32-1032	.50	.191	C2-1032	.191	M01-1024	.189	2.10	M1-1024	.189	2.60	M2-1024	.189	3.60	M3-1024	.189	4.60
-1032						M01-1032			M2-1032								
-420	A32-428	.61	.250	C2-12	.250	M01-420	.248	2.40	M1-420	.248	2.85	M2-420	.248	3.85	M3-420	.248	4.85
-428						M01-12			M2-12								
-518	A32-524	.80	.313	C2-14	.313	M01-518	.310	2.50	M1-518	.310	3.00	M2-518	.310	4.00	M3-518	.310	5.00
-524						M01-14			M2-14								
-616	A32-624	.89	.375	C2-16	.375	M01-616	.373	2.58	M1-616	.373	3.05	M2-616	.373	4.05	M3-616	.373	5.05
-624						M01-16			M2-16								

**'C' Extended Driving Tools (3.85 long Anvil). For Use with BG2500 Gun.**



BLIND NUT FIRST DASH NO.	ANVIL ("C" Type)		CHUCK		MANDREL												
	TOOL NO. TO ORDER	C DIA.	M DIA.	TOOL NO. TO ORDER	M DIA.	MIN. GRIP-1/2" BLIND NUT GRIP RANGE			1/2"-1" BLIND NUT GRIP RANGE			1"-2" BLIND NUT GRIP RANGE			2"-3" BLIND NUT GRIP RANGE		
						TOOL NO. TO ORDER	D DIA.	L	TOOL NO. TO ORDER	D DIA.	L	TOOL NO. TO ORDER	D DIA.	L	TOOL NO. TO ORDER	D DIA.	L
-440	A34-440	.29	.113	C1-5	.113	M2.5-5	.111	3.80	M3-5	.111	4.30						
-632	A34-632	.31	.141	C1-632	.141	M2.5-632	.139	3.90	M3-632	.139	4.40						
-832	A34-832	.41	.166	C2-8	.166	M2.5-8	.164	4.00	M3-8	.164	4.50	M4-8	.164	5.50			
-1024	A34-1032	.49	.193	C2-1032	.191	M2.5-1024	.189	4.10	M3-1024	.189	4.60	M4-1024	.189	5.60	M5-1024	.189	6.60
-1032						M2.5-1032			M3-1032			M4-1032			M5-1032		
-420	A34-428	.60	.250	C2-12	.250	M2.5-420	.248	4.40	M3-420	.248	4.85	M4-420	.248	5.85	M5-420	.248	6.85
-428						M2.5-12			M3-12			M4-12			M5-12		
-518	A34-524	.79	.313	C2-14	.313	M2.5-518	.310	4.50	M3-518	.310	5.00	M4-518	.310	6.00	M5-518	.310	7.00
-524						M2.5-14			M3-14			M4-14			M5-14		
-616	A34-624	.89	.375	C2-16	.375	M2.5-616	.373	4.58	M3-616	.373	5.05	M4-616	.373	6.05	M5-616	.373	7.05
-624						M2.5-16			M3-16			M4-16			M5-16		

## BLIND BOLT "J" TYPE DRIVING TOOLS

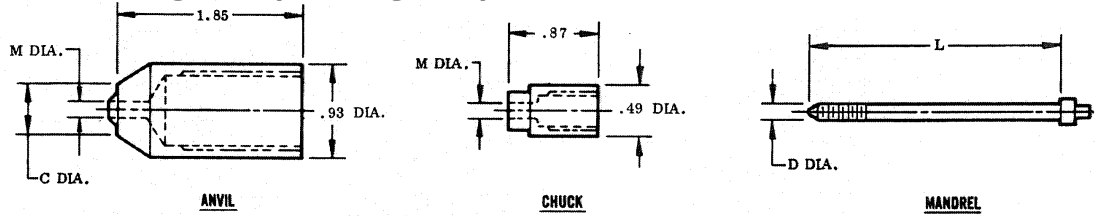
Install these Blind Bolt Part Numbers

HEAD STYLE: 100° Countersunk, MS24694 or AN509 Head

HEAD STYLE: Protruding Head

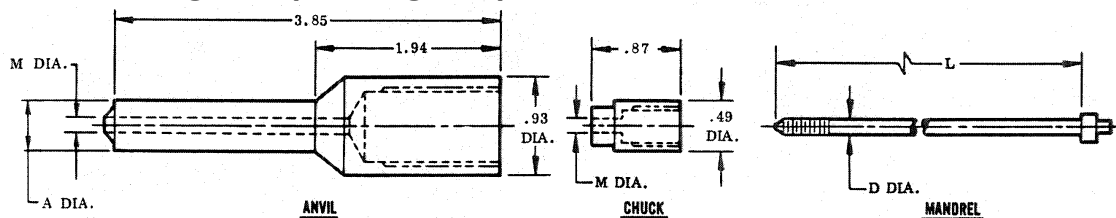
BB351	BB351.64G	BB352.32P	BB365	BB428
BB351G	BB351.64P	BB352.32PB	BB366	BB428G
BB351P	BB351.64PB	BB352.64	BB370	BB428P
BB351PB	BB352	BB352.64G	BB379	BB428PB
BB351.32	BB352G	BB352.64P	BB380	BB430
BB351.32G	BB352P	BB352.64PB	BB386	BB430G
BB351.32P	BB352PB	BB354	BB391	BB445
BB351.32PB	BB352.32	BB362	BB399	BB515G
BB351.64	BB352.32G	BB363	BB402	

### 'J' Standard Driving Tools (1.85 long Anvil). For Use with BG1750 Gun.



BLIND BOLT FIRST DASH NO.	ANVIL ("J" Type)		CHUCK		MANDREL												
	TOOL NO. TO ORDER	C DIA.	M DIA.	TOOL NO. TO ORDER	M DIA.	MIN. GRIP-1/2" BLIND BOLT GRIP RANGE			1/2"-1" BLIND BOLT GRIP RANGE			1"-2" BLIND BOLT GRIP RANGE			2"-3" BLIND BOLT GRIP RANGE		
						TOOL NO. TO ORDER	D DIA.	L	TOOL NO. TO ORDER	D DIA.	L	TOOL NO. TO ORDER	D DIA.	L	TOOL NO. TO ORDER	D DIA.	L
-5	A11-5	.32	.113	C1-5	.113	M01-5	.111	1.80	M1-5	.111	2.30						
-6	A11-6	.37	.125	C1-6	.125	M01-6	.123	1.90	M1-6	.123	2.40						
-8	A11-8	.50	.166	C1-8	.166	M01-8	.164	2.00	M1-8	.164	2.50	M2-8	.164	3.50			
-10	A11-10	.62	.219	C1-10	.219	M01-10	.217	2.20	M1-10	.217	2.70	M2-10	.217	3.70	M3-10	.217	4.70

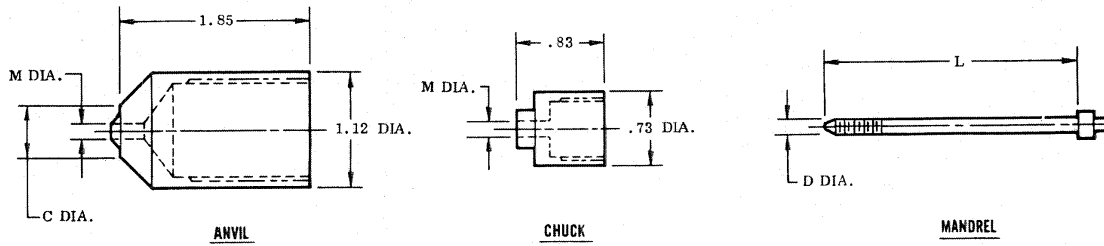
### 'J' Extended Driving Tools (3.85 long Anvil). For Use with BG1750 Gun.



BLIND BOLT FIRST DASH NO.	ANVIL ("J" Type)		CHUCK		MANDREL												
	TOOL NO. TO ORDER	A DIA.	M DIA.	TOOL NO. TO ORDER	M DIA.	MIN. GRIP-1/2" BLIND BOLT GRIP RANGE			1/2"-1" BLIND BOLT GRIP RANGE			1"-2" BLIND BOLT GRIP RANGE			2"-3" BLIND BOLT GRIP RANGE		
						TOOL NO. TO ORDER	D DIA.	L	TOOL NO. TO ORDER	D DIA.	L	TOOL NO. TO ORDER	D DIA.	L	TOOL NO. TO ORDER	D DIA.	L
-5	A12-5	.32	.113	C1-5	.113	M2.5-5	.111	3.80	M3-5	.111	4.30						
-6	A12-6	.37	.125	C1-6	.125	M2.5-6	.123	3.90	M3-6	.123	4.40						
-8	A12-8	.49	.166	C1-8	.166	M2.5-8	.164	4.00	M3-8	.164	4.50	M4-8	.164	5.50			
-10	A12-10	.62	.219	C1-10	.219	M2.5-10	.217	4.20	M3-10	.217	4.70	M4-10	.217	5.70	M5-10	.217	6.70

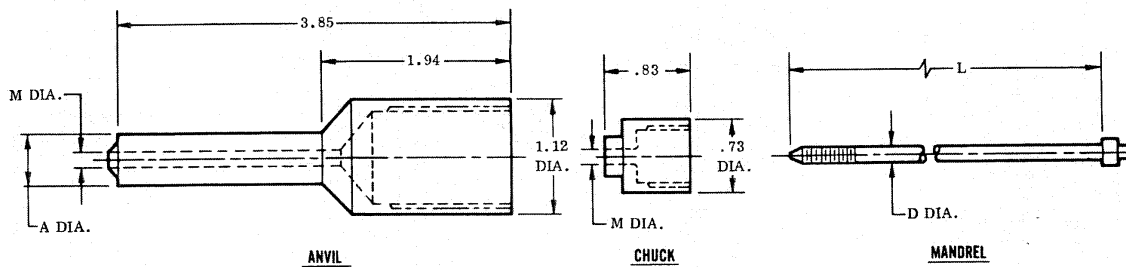


## 'J' Standard Driving Tools (1.85 long Anvil). For Use with BG2500 Gun.



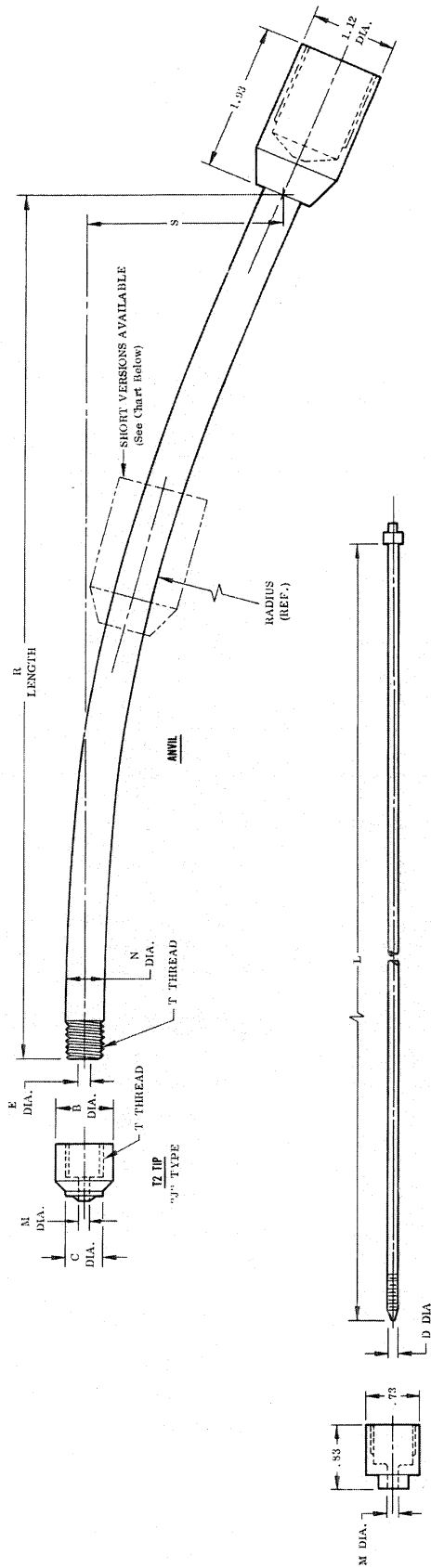
BLIND BOLT FIRST DASH NO.	ANVIL ("J" Type)		CHUCK		MANDREL												
	TOOL NO. TO ORDER	C DIA.	M DIA.	TOOL NO. TO ORDER	M DIA.	MIN. GRIP-1/2" BLIND BOLT GRIP RANGE			1/2"-1" BLIND BOLT GRIP RANGE			1"-2" BLIND BOLT GRIP RANGE			2"-3" BLIND BOLT GRIP RANGE		
						TOOL NO. TO ORDER	D DIA.	L	TOOL NO. TO ORDER	D DIA.	L	TOOL NO. TO ORDER	D DIA.	L	TOOL NO. TO ORDER	D DIA.	L
-5	A21-5	.32	.113	C2-5	.113	M01-5	.111	1.80	M1-5	.111	2.30						
-6	A21-6	.37	.125	C2-6	.125	M01-6	.123	1.90	M1-6	.123	2.40						
-8	A21-8	.50	.166	C2-8	.166	M01-8	.164	2.00	M1-8	.164	2.50	M2-8	.164	3.50			
-10	A21-10	.62	.219	C2-10	.219	M01-10	.217	2.20	M1-10	.217	2.70	M2-10	.217	3.70	M3-10	.217	4.70
-12	A21-12	.75	.250	C2-12	.250	M01-12	.248	2.40	M1-12	.248	2.85	M2-12	.248	3.85	M3-12	.248	4.85
-14	A21-14	.88	.313	C2-14	.313	M01-14	.310	2.50	M1-14	.310	3.00	M2-14	.310	4.00	M3-14	.310	5.00
-16	A21-16	1.00	.375	C2-16	.375	M01-16	.373	2.58	M1-16	.373	3.05	M2-16	.373	4.05	M3-16	.373	5.05

## 'J' Extended Driving Tools (3.85 long Anvil). For Use with BG2500 Gun.



BLIND BOLT FIRST DASH NO.	ANVIL ("J" Type)		CHUCK		MANDREL												
	TOOL NO. TO ORDER	A DIA.	M DIA.	TOOL NO. TO ORDER	M DIA.	MIN. GRIP-1/2" BLIND BOLT GRIP RANGE			1/2"-1" BLIND BOLT GRIP RANGE			1"-2" BLIND BOLT GRIP RANGE			2"-3" BLIND BOLT GRIP RANGE		
						TOOL NO. TO ORDER	D DIA.	L	TOOL NO. TO ORDER	D DIA.	L	TOOL NO. TO ORDER	D DIA.	L	TOOL NO. TO ORDER	D DIA.	L
-5	A22-5	.32	.113	C2-5	.113	M2.5-5	.111	3.80	M3-5	.111	4.30						
-6	A22-6	.37	.125	C2-6	.125	M2.5-6	.123	3.90	M3-6	.123	4.40						
-8	A22-8	.49	.166	C2-8	.166	M2.5-8	.164	4.00	M3-8	.164	4.50	M4-8	.164	5.50			
-10	A22-10	.62	.219	C2-10	.219	M2.5-10	.217	4.20	M3-10	.217	4.70	M4-10	.217	5.70	M5-10	.217	6.70
-12	A22-12	.75	.250	C2-12	.250	M2.5-12	.248	4.40	M3-12	.248	4.85	M4-12	.248	5.85	M5-12	.248	6.85
-14	A22-14	.88	.313	C2-14	.313	M2.5-14	.310	4.50	M3-14	.310	5.00	M4-14	.310	6.00	M5-14	.310	7.00
-16	A22-16	1.00	.375	C2-16	.375	M2.5-16	.373	4.55	M3-16	.373	5.05	M4-16	.373	6.05	M5-16	.373	7.05

## 'J' Offset Driving Tools. For Use with BG2500 Gun.



BLIND BOLT FIRST DASH NO.	ANVIL					TIP - ('J' Type)					CHUCK		0-1" GRIP		1"-2" GRIP				
	PART NO.	E DIA.	N DIA.	R LENGTH	S OFFSET	T THREAD	PART NO.	C DIA.	B DIA.	M DIA.	T THREAD	PART NO.	M DIA.	PART NO.	D DIA.	LENGTH	PART NO.	D DIA.	LENGTH
-5	A211-1	.19	.50	10.0	2.50	1/2-20	T2-5	.32	.750	.113	1/2-20	C2-5	.113	M6-5	.111	13.0	—	—	—
	A211-5	.19	.50	5.2	.75	1/2-20	T2-5	.32	.750	.113	1/2-20	C2-5	.113	M8-5	.111	8.0	—	—	—
-6	A211-1	.19	.50	10.0	2.50	1/2-20	T2-6	.37	.750	.125	1/2-20	C2-6	.125	M6-6	.123	13.0	—	—	—
	A211-5	.19	.50	5.2	.75	1/2-20	T2-6	.37	.750	.125	1/2-20	C2-6	.125	M8-6	.123	8.0	—	—	—
-8	A211-2	.23	.50	11.5	2.00	1/2-20	T2-8	.50	.750	.166	1/2-20	C2-8	.166	M6-8	.164	14.5	M7-8	.164	15.5
	A211-6	.23	.50	6.2	.72	1/2-20	T2-8	.50	.750	.166	1/2-20	C2-8	.166	M8-8	.164	9.5	—	—	—
-10	A211-2	.23	.50	11.5	2.00	1/2-20	T2-10	.62	.750	.219	1/2-20	C2-10	.219	M6-10	.217	14.5	M7-10	.217	15.5
	A211-6	.23	.50	6.2	.72	1/2-20	T2-10	.62	.750	.219	1/2-20	C2-10	.219	M8-10	.217	9.5	—	—	—
-12	A211-3	.31	.62	11.2	1.80	5/8-20	T2-12	.75	.837	.250	5/8-20	C2-12	.250	M6-12	.248	14.5	M7-12	.248	15.5
	A211-7	.31	.62	6.0	.62	5/8-20	T2-12	.75	.837	.250	5/8-20	C2-12	.250	M8-12	.248	9.5	—	—	—

\*Note: The above offset driving tools (for Blind Bolt sizes -5 thru -10) can be used with the BG1750 Gun when the latter is converted with the AA1 Anvil Adaptor and C1 series Chuck.

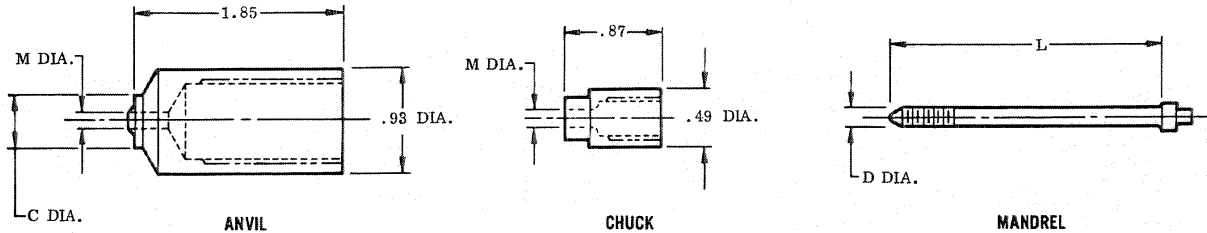
# BLIND BOLT "K" TYPE DRIVING TOOLS

Install these Blind Bolt Part Numbers

HEAD STYLE: 100° Countersunk, MS20426 or AN426 Head

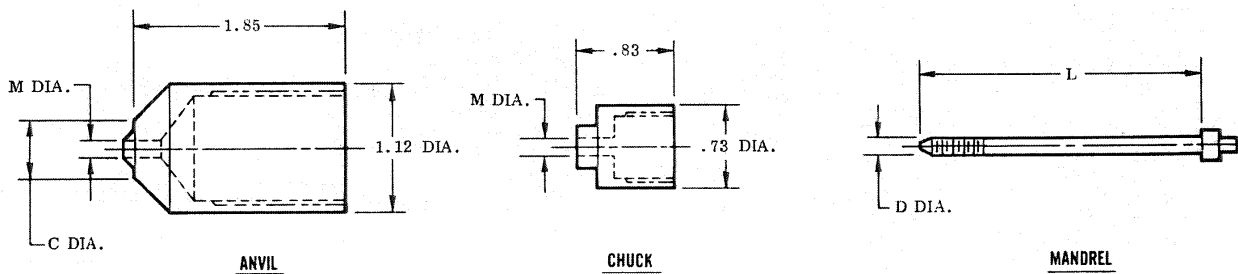
BB368      BB371      BB382      BB436  
 BB369      BB381      BB432      BB517

## 'K' Standard Driving Tools (1.85 long Anvil). For Use with BG1750 Gun.



BLIND BOLT FIRST DASH NO.	ANVIL ("K" Type)			CHUCK		MANDREL								
	TOOL NO. TO ORDER	C DIA.	M DIA.	TOOL NO. TO ORDER	M DIA.	MIN. GRIP-1/2" BLIND BOLT GRIP RANGE			1/2"-1" BLIND BOLT GRIP RANGE			1"-2" BLIND BOLT GRIP RANGE		
						TOOL NO. TO ORDER	D DIA.	L	TOOL NO. TO ORDER	D DIA.	L	TOOL NO. TO ORDER	D DIA.	L
-5	A19-5	.27	.113	C1-5	.113	M01-5	.111	1.80	M1-5	.111	2.30			
-6	A19-6	.34	.125	C1-6	.125	M01-6	.123	1.90	M1-6	.123	2.40			
-8	A19-8	.46	.166	C1-8	.166	M01-8	.164	2.00	M1-8	.164	2.50	M2-8	.164	3.50
-10	A19-10	.55	.219	C1-10	.215	M01-10	.217	2.20	M1-10	.217	2.70	M2-10	.217	3.70

## 'K' Standard Driving Tools (1.85 long Anvil). For Use with BG2500 Gun.



BLIND BOLT FIRST DASH NO.	ANVIL ("K" Type)			CHUCK		MANDREL								
	TOOL NO. TO ORDER	C DIA.	M DIA.	TOOL NO. TO ORDER	M DIA.	MIN. GRIP-1/2" BLIND BOLT GRIP RANGE			1/2"-1" BLIND BOLT GRIP RANGE			1"-2" BLIND BOLT GRIP RANGE		
						TOOL NO. TO ORDER	D DIA.	L	TOOL NO. TO ORDER	D DIA.	L	TOOL NO. TO ORDER	D DIA.	L
-5	A21-5A	.27	.113	C2-5	.113	M01-5	.111	1.80	M1-5	.111	2.30			
-6	A21-6A	.34	.125	C2-6	.125	M01-6	.123	1.90	M1-6	.123	2.40			
-8	A21-8A	.46	.166	C2-8	.166	M01-8	.164	2.00	M1-8	.164	2.50	M2-8	.164	3.50
-10	A21-10A	.55	.219	C2-10	.215	M01-10	.217	2.20	M1-10	.217	2.70	M2-10	.217	3.70

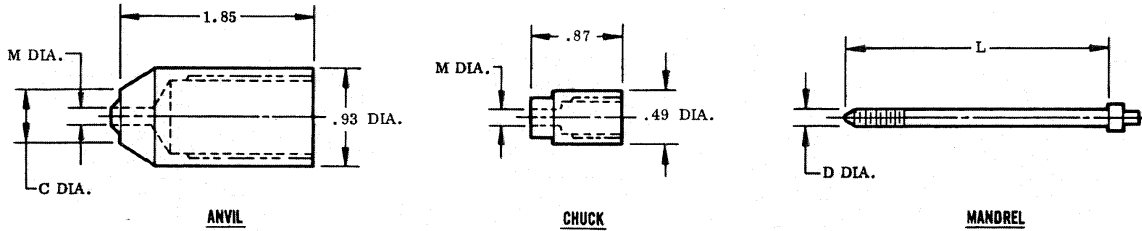
## BLIND BOLT "L" TYPE DRIVING TOOLS

Install these Blind Bolt Numbers

HEAD STYLE: Large Bearing Countersunk Head, and 100° Countersunk Shear Head

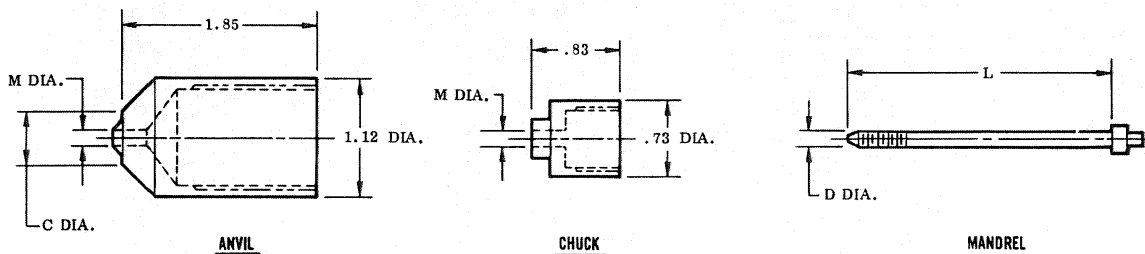
BB437      BB449      BB518  
BB441      BB450

### 'L' Standard Driving Tools (1.85 long Anvil). For Use with BG1750 Gun.



BLIND BOLT FIRST DASH NO.	ANVIL ("L" Type)		CHUCK		MANDREL						
	TOOL NO. TO ORDER	C DIA.	M DIA.	TOOL NO. TO ORDER	M DIA.	MIN.-1/2" GRIP		1/2"-1" GRIP			
						TOOL NO. TO ORDER	D DIA.	L DIA.	TOOL NO. TO ORDER	D DIA.	L DIA.
-5	A45-5	.25	.113	C1-5	.113	M01-5	.111	1.80	M1-5	.111	2.30
-6	A45-6	.29	.125	C1-6	.125	M01-6	.123	1.90	M1-6	.123	2.40
-8	A45-8	.38	.166	C1-8	.166	M01-8	.164	2.00	M1-8	.164	2.50

### 'L' Standard Driving Tools (1.85 long Anvil). For Use with BG2500 Gun.



BLIND BOLT FIRST DASH NO.	ANVIL ("L" Type)		CHUCK		MANDREL						
	TOOL NO. TO ORDER	C DIA.	M DIA.	TOOL NO. TO ORDER	M DIA.	MIN.-1/2" GRIP		1/2"-1" GRIP			
						TOOL NO. TO ORDER	D DIA.	L DIA.	TOOL NO. TO ORDER	D DIA.	L DIA.
-5	A46-5	.25	.113	C2-5	.113	M01-5	.111	1.80	M1-5	.111	2.30
-6	A46-6	.29	.125	C2-6	.125	M01-6	.123	1.90	M1-6	.123	2.40
-8	A46-8	.38	.166	C2-8	.166	M01-8	.164	2.00	M1-8	.164	2.50

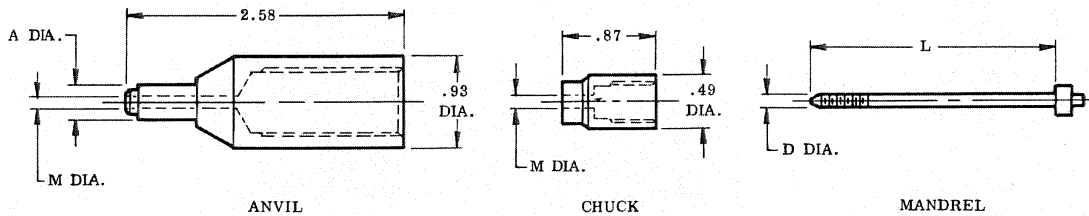
## BLIND BOLT "M" TYPE DRIVING TOOLS

Install these Blind Bolt Part Numbers BB420G BB575

HEAD STYLE: Protruding Head, Retaining Core Bolt Style

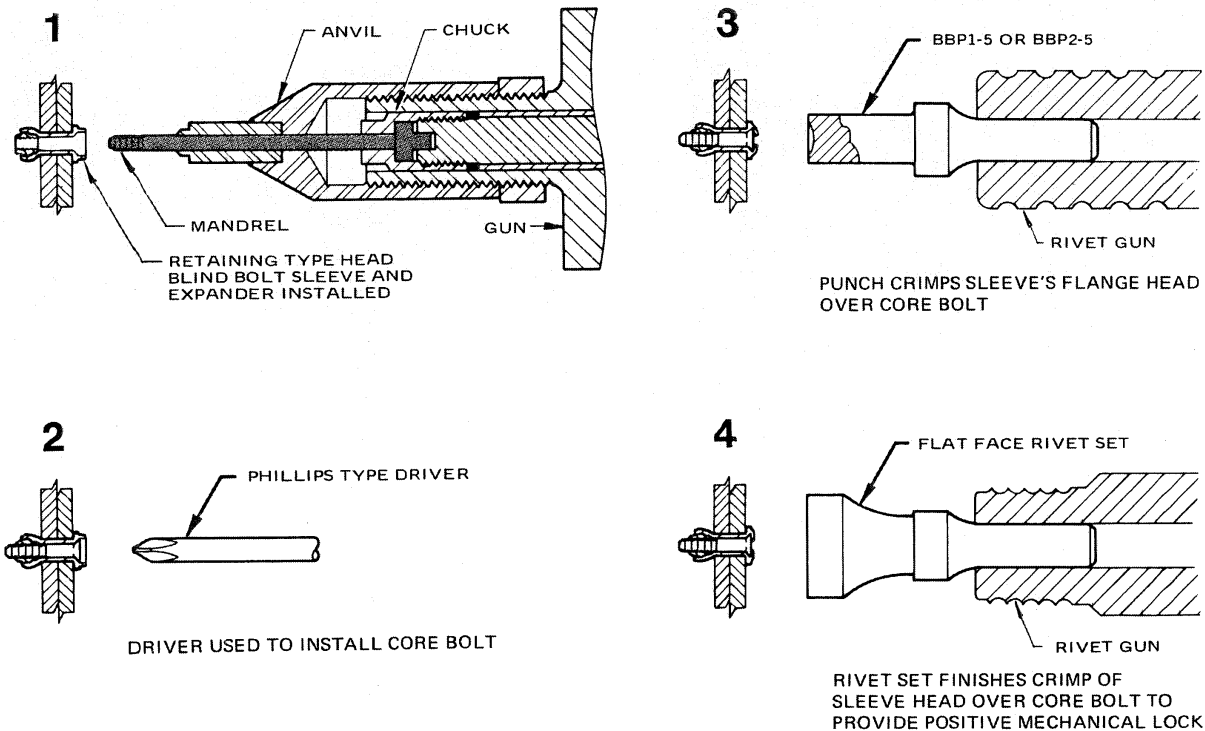
Note: In addition to the tools listed below, a standard flat-faced rivet set is needed to crimp the head of the installed fastener. For Further information on tooling and installation procedure, request brochure 2-109922.

### 'M' Standard Driving Tools (1.85 long Anvil). For Use with BG1750 Gun.



BLIND BOLT FIRST DASH NO.	ANVIL ("L" Type)			CHUCK		MANDREL			CORE BOLT DRIVER RECESS (REF.)	PUNCH	
	TOOL NO. TO ORDER	A DIA.	M DIA.	TOOL NO. TO ORDER	M DIA.	TOOL NO. TO ORDER	D DIA.	L		.498 SHANK	.401 SHANK
-5	A43-5	.32	.113	C1-5	.113	M1-5	.111	2.30	Phillips #1	BBP1-5	BBP2-5

### Additional Installation Procedure - Required for Retaining Core Bolt-style Blind Bolts.





## Installation Tooling

Installation tooling for Blind Nuts and Blind Bolts requires a hand held hydraulic gun fitted with the proper size driving tools, and actuated by one of Hi-Shear's portable hydraulic Power Units. Operated by factory air pressure of 90 psi, these Power Units can be adjusted by the worker to provide sustained pressure to the Guns, suitable to the individual settings required by each size Blind Nut or Blind Bolt. The Power Units are design-rated to 3000 psi, and being activated by air pressure are non-sparking in operation, and can be safely used in flight ramp areas. These units are suitable for factory or field use, are compact in size, mobile, and are built to precision standards. They are simple to operate, easy to maintain, and are constructed for rugged usage. A maintenance manual is furnished with each unit. As portable hydraulic power sources, these units can be adapted to other uses in addition to fastener installation.

For factory or field convenience, Driving Tool Kits are available which contain individual tools necessary to drive a variety of sizes of Blind Nuts and Blind Bolts. These kits are packaged in metal boxes, ready to be attached to the caster equipped Power Units.

Hand installation tooling is also available for field service or limited use applications.

### BP7000 Air-Hydraulic Power Unit

This Power Unit, wheel mounted, is designed for factory production work. It is non-sparking in design; hence, it can be used safely for the repair of fueled aircraft or launch-ready vehicles. It is actuated from a normal factory air pressure of 90 psi. Weight (with furnished 12' hose but no gun) is approximately 78 lbs. Overall dimensions are 17½" wide, 39¾" long and 25½" high.

Ordering part number:

BP7000 Power Unit Assembly (Does not include Gun or Driving Tool Kit)

Note: The BP7000 Power Unit replaces the earlier BP3000 Air-Hydraulic Power Unit, the latter no longer available for ordering. Spare parts for the BP3000 Unit can still be obtained.

Federal Stock Number 5130-944-5621. Manufacturer's Code 73197.

### Complete Kits for Power Units, Guns and Tools.

Power Units, Guns and installation tooling can be conveniently ordered in complete kits by a single part number as indicated below or by individual component part numbers as described on subsequent pages of this brochure. For description of "BK" series Driving Tool Kits see pages 34 and 35.

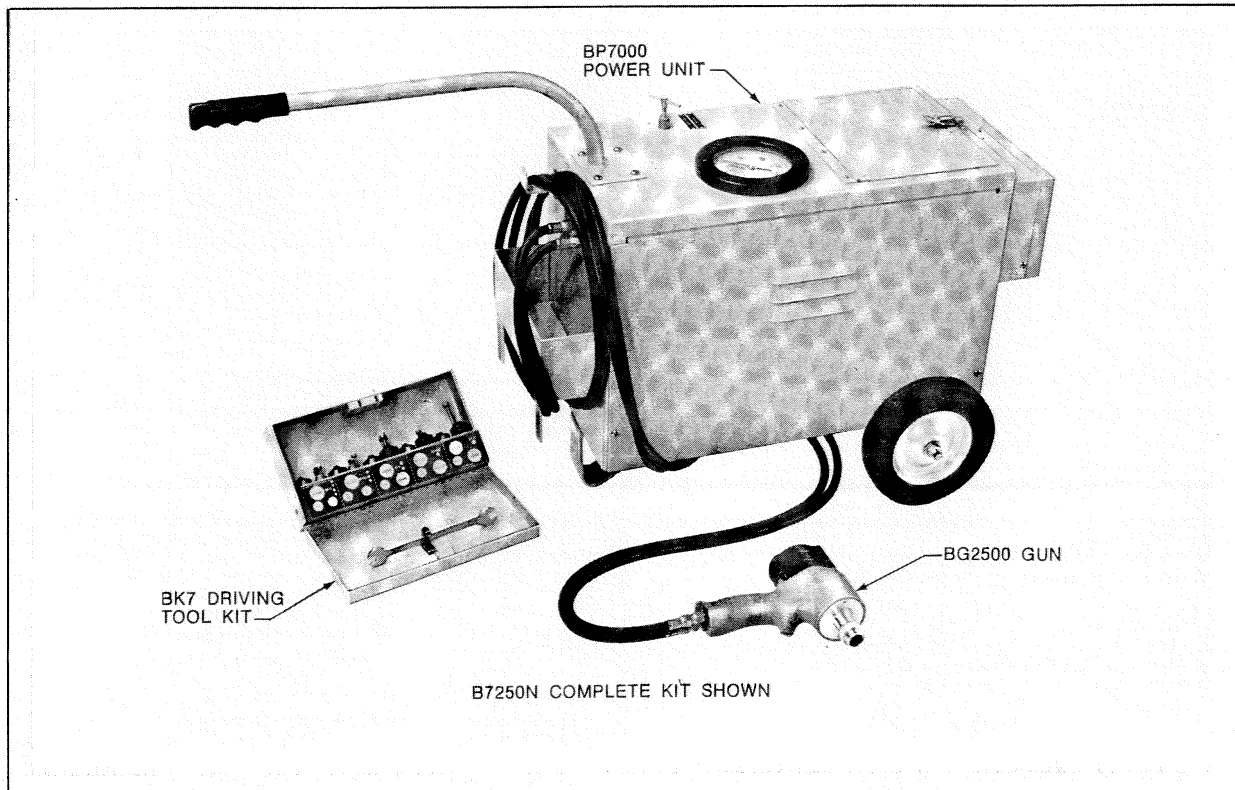
**B7175** Complete Kit, includes:  
BP7000 Air-Hydraulic Power Unit  
BG1750 Gun  
BK3 Driving Tool Kit—Blind Bolts (-5 thru -10 sizes, "J" type tooling)

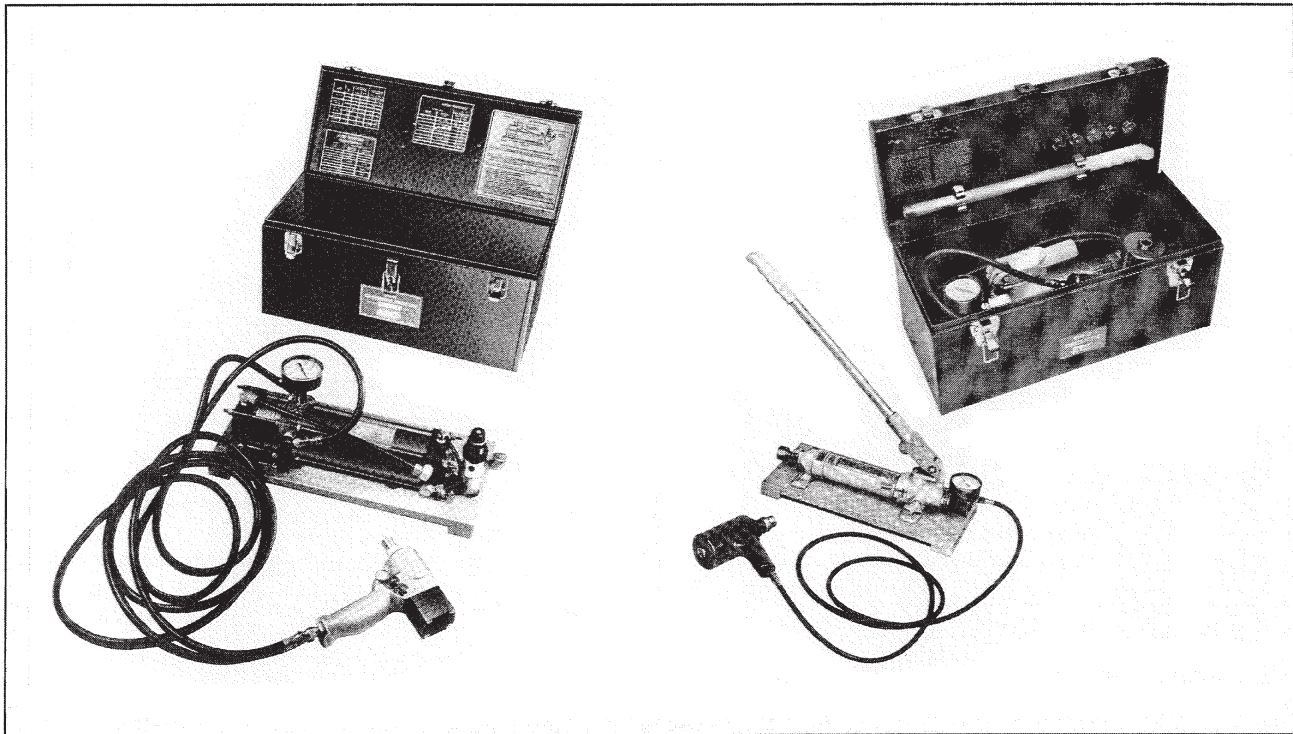
**B7175N** Complete Kit, includes:  
BP7000 Air-Hydraulic Power Unit  
BG1750 Gun  
BK6 Driving Tool Kit—Blind Nuts (-440 thru 1032 sizes, "A" and "B" type tooling)

**B7250** Complete Kit, includes:  
BP7000 Air-Hydraulic Power Unit  
BG2500 Gun  
BK4 Driving Tool Kit—Blind Bolts (-5 thru -12 sizes, "J" type tooling)

**B7250N** Complete Kit, includes:  
BP7000 Air-Hydraulic Power Unit  
BG2500 Gun  
BK7 Driving Tool Kit—Blind Nuts (-440 thru -428 sizes "A" and "B" type tooling)

NOTE: The BK8 Driving Tool Kit is for use with the BG2500 Gun to install -12, -14 and -16 diameter Blind Bolts and -428 thru -820 Blind Nuts and is available on optional order.





### BH245 Air-hydraulic Unit

The versatile and portable BH245 Power Unit is intended for work areas where mobility and ease of carrying are essential, particularly when scaffolds, workstands and ladders are involved to gain access to off-the-floor work locations. It operates from a normal factory air pressure of 90 psi, and being air actuated, the unit is non-sparking and safe for use on fueled aircraft and launch-ready vehicles. The BH245 Power Unit will provide hydraulic pressure up to 2700 psi to operate Hi-Shear's Blind Nut-Blind Bolt installation guns, and can be adapted to a variety of other uses requiring hydraulic pressure. The unit is compact, rugged, and lightweight (26 lbs.).

Ordering part numbers:

- BH245 Power Unit Assembly (Power Unit Only)
- BH245-17 Power Unit Assembly (Includes Unit, BG1750 Gun and Hose)
- BH245-25 Power Unit Assembly (Includes Unit, BG2500 Gun and Hose)

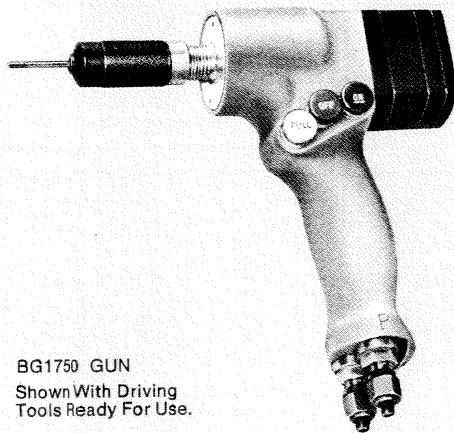
### BH25AC Hand Pump Assembly

The BH25A Hand Pump & Case Assembly is designed to facilitate the installation of BN & BB Series Blind Nuts™ and Blind Bolts™ manufactured by Hi-Shear Corporation. The complete BH25A Assembly consists of a Hand Pump Assembly (BH26A), and a Case Assembly (BH85). The Hand Pump Assembly includes a Hydraulic Hand Pump (BH95), a Hydraulic Gun (BH86), a Hydraulic Hose (BH102), and any combination of four (4) sets of driving tools (Anvils, Chucks, Mandrels) for use on the BH86 Hydraulic Gun. Any driving tool part number listed in the catalog for use on the BG2500 Hydraulic Gun will fit the BH86 Hydraulic Gun included in this unit.

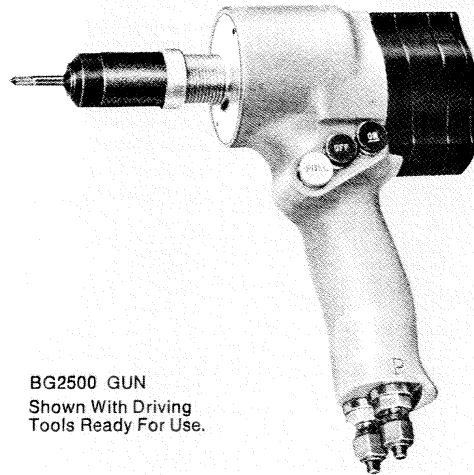
### Driving Pressure (PSI) - Power Unit Settings

BLIND NUT SIZE	BLIND BOLT SIZE	BG1750 GUN		BG2500 GUN	
		2017 AL. BN518	STAINLESS STEEL BN360, BB351, BB352	2017 AL. BN518	STAINLESS STEEL BN360, BB351, BB352
-440 (440)	-5 (5/32)	350	500		
-632 (6-32)	-6 (3/16)	500	700 800		
-832 (8-32)	-8 (1/4)	750	1100		650
-1032 (10-32) -1024 (10-24)	10 (5/16)	1000	1850	500	950
-428 (1/4-28) -420 (1/4-20)	-12 (3/8)			1000	1450
-524 (5/16-24) -518 (5/16-18)	-14 (7/16)			1100	1900
-624 (3/8-24) -616 (3/8-16)	-16 (1/2)			1250	2250
-720 (7/16-20) -714 (7/16-14)				1400	2300
-820 (1/2-20) -813 (1/2-13)				1500	2350

## Hydraulic Guns



**BG1750 GUN**  
Shown With Driving  
Tools Ready For Use.



**BG2500 GUN**  
Shown With Driving  
Tools Ready For Use.

These guns are used to install Hi-Shear type blind fasteners such as the Blind Bolt, Blind Nut, Hi-Kor Blind Fasteners, and Hi-Sert and Blind-Sert Inserts. The guns are operated by hydraulic pressure supplied from Hi-Shear manufactured Power Units BP7000, BH245 and BH25A. The Gun is designed for operation simplicity and for worker comfort. The worker presses three control buttons in a ON (red), PULL (white) and OFF (blue) sequence with his thumb. This rotates the Gun's mandrel in a clockwise motion, engaging the expander; retracts the mandrel, drawing the expander into the sleeve; and rotates the mandrel in a counterclockwise motion, releasing the mandrel from the expander. End-loading by the worker is not required, only nominal effort by one hand to properly position the Gun to the hole.

The compact-sized BG1750 Gun was especially designed to gain accessibility into tightly congested areas. It efficiently installs small Blind Bolts in sizes from -5 (5/32) thru -10 (5/16) and Blind Nuts in thread sizes from 4-40 thru 10-32 or 10-24. Weight: 3.3 lbs.

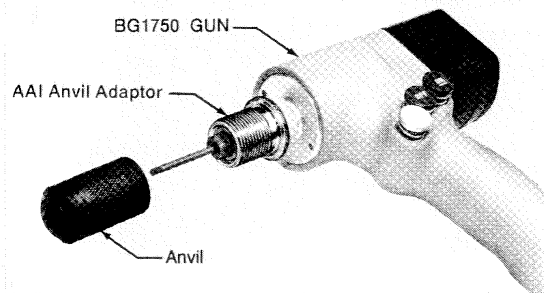
Federal Stock Number 5130-845-8172, Manufacturer's Code 73197.

The all-purpose BG2500 Gun installs all sizes (up thru 1/2" diameter) of Blind Bolts and Blind Nuts. It is most efficient for Blind Bolts starting in -8 (1/4) and Blind Nuts in 8-32 and larger sizes. It can install smaller sizes but with a slower action. Weight: 5.5 lbs.

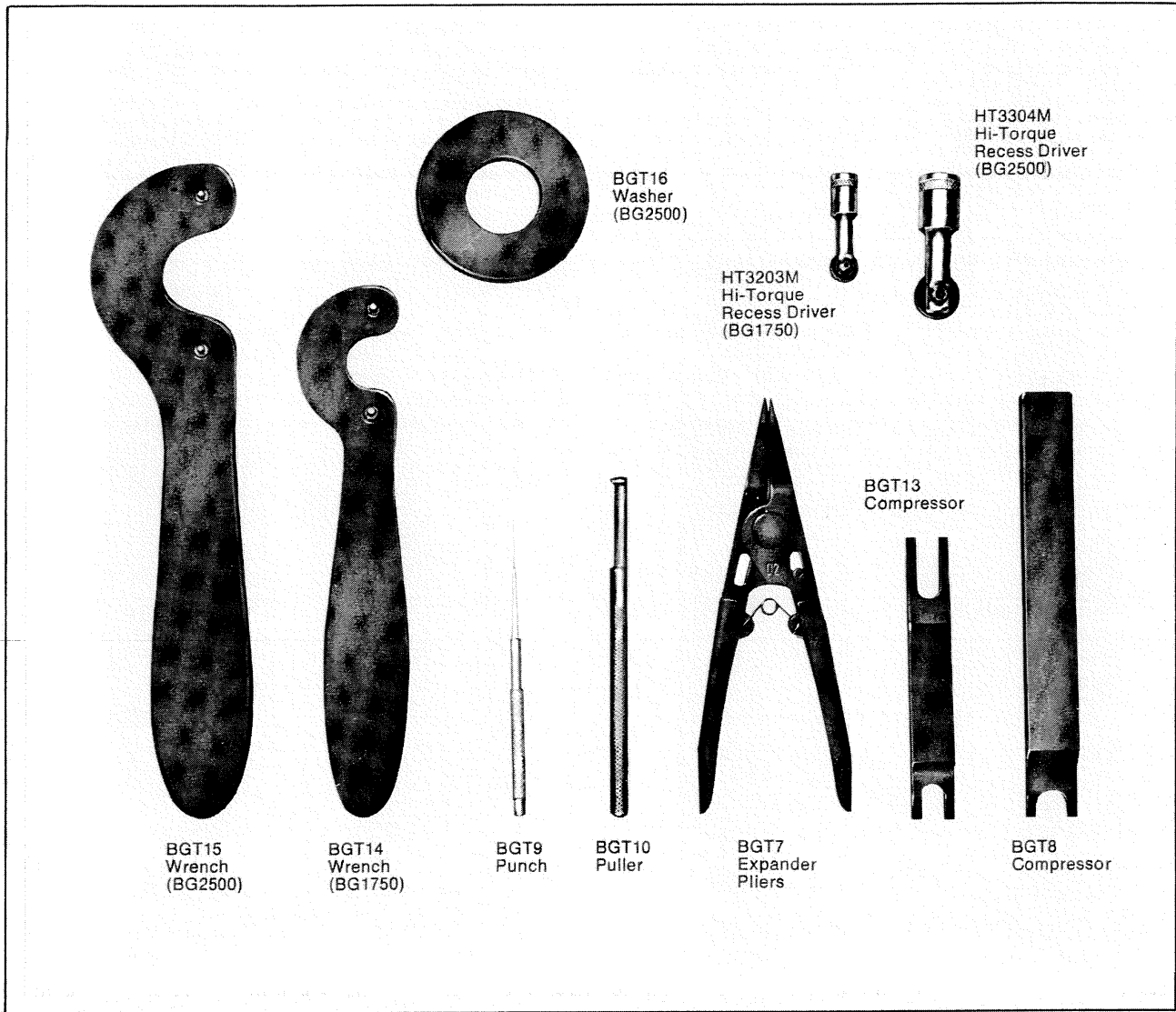
Federal Stock Number 5130-760-9677, Manufacturer's Code 73197.

## Anvil Adaptor (BG1750 to BG2500)

The BG1750 Gun, fitted with an AA1 Anvil Adaptor, can be used with BG2500 type Anvils to install Blind Bolts (in nominal diameters up through 5/16 or -10) and Blind Nuts (in thread sizes up through 10-32/10-24 or -1032/-1024). The Adaptor can be used in combination with BG2500 type Standard, Extended and Offset Anvils fitted to the BG1750 Gun to install blind fastener sizes within the driving pressure capacity of the Gun.







Service tools to simplify the maintenance of the Guns are available individually or in kit form.

The Kits include:  
 BGT2 Complete Kit for service of BG1750, and BG2500 Guns.  
 BGT3 Kit for service of BG1750 Gun.  
 BGT4 Kit for service of BG2500 Gun.

KIT CONTENTS (One Each)	KIT BGT2 All Guns	KIT BGT3 BG1750 Gun	KIT BGT4 BG2500 Gun
WRENCH Nose End	BGT14 BGT15	BGT14	BGT15
PUNCH Control Button Pin	BGT9	BGT9	BGT9
PULLER Control Button Valve Spoon	BGT10	BGT10	BGT10
EXPANDER PLIERS Swivel Fitting Snap Ring	BGT7	BGT7	BGT7
COMPRESSOR Control Button Assembly	BGT13	BGT13	BGT13
COMPRESSOR Control Button Removal	BGT8	BGT8	BGT8
DRIVER Hi-Torque Recess Bolts	HT3203M HT3304M	HT3203M	HT3304M
WASHER Nose End Removal	BGT16		BGT16